



To: Pre-Bid Meeting Attendees

From: Roger Washington
City of Mobile Architectural Engineering Department

Re: Springhill Recreation Center - Stage & Classroom Improvements
Project #PR-087-23

Date: September 17, 2024

This Addendum forms a part of, and modifies, the Call for Bids for the above referenced project, dated July 31 2024. Acknowledge the receipt of this Addendum No. 5 and all subsequent Addenda, if any, in the space provided on the Bid Form. Failure to do so may subject Bidder to disqualification.

General:

Item 1. BID DATE: Change the bid date in all references to October 2, 2024, in all portions of the Request for Bids. All other aspects of the Bid receipt information remains the same.

Clarifications: N/A

Forms and Specifications: N/A

Drawings: N/A

RFI's:

Item 1. The following chairlifts have been approved as equals by the Architect or Record.

1. Symmetry Chair Lift – VPL UL-42
2. Ascension – Protégé 5442FG

*Please note that any product may not be substituted without approval by the Architect or Record prior to bidding.

Attachments:

1. Chairlift cut sheets:
 - a. Symmetry Chair Lift – VPL UL-42
 - b. Ascension – Protégé 5442FG

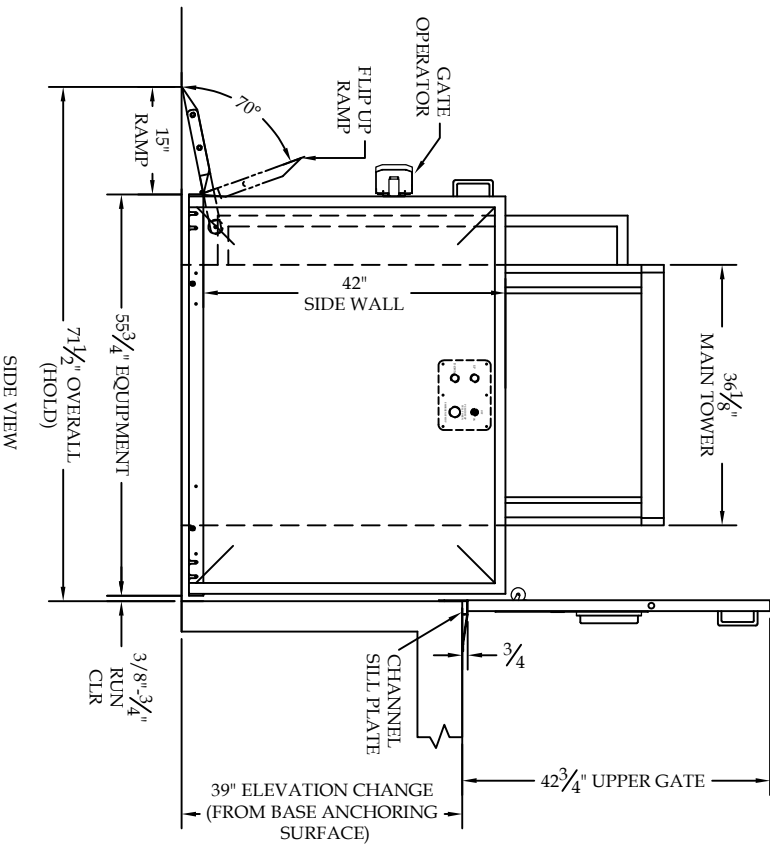
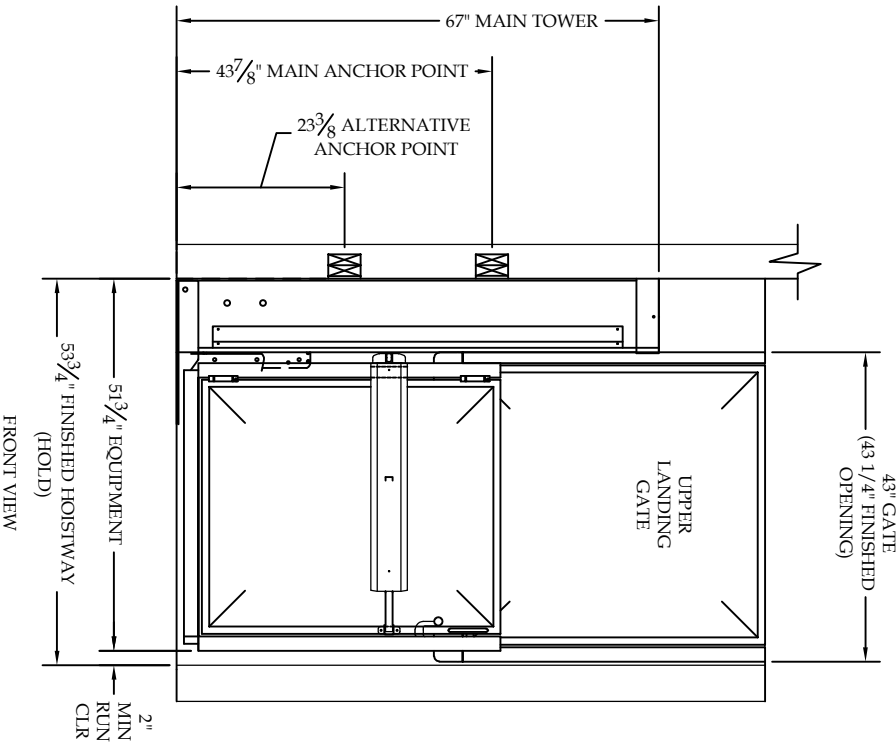
END OF ADDENDUM NO. 5

Symmetry Chair Lift – VPL UL-42

CONSTRUCTION NOTES:

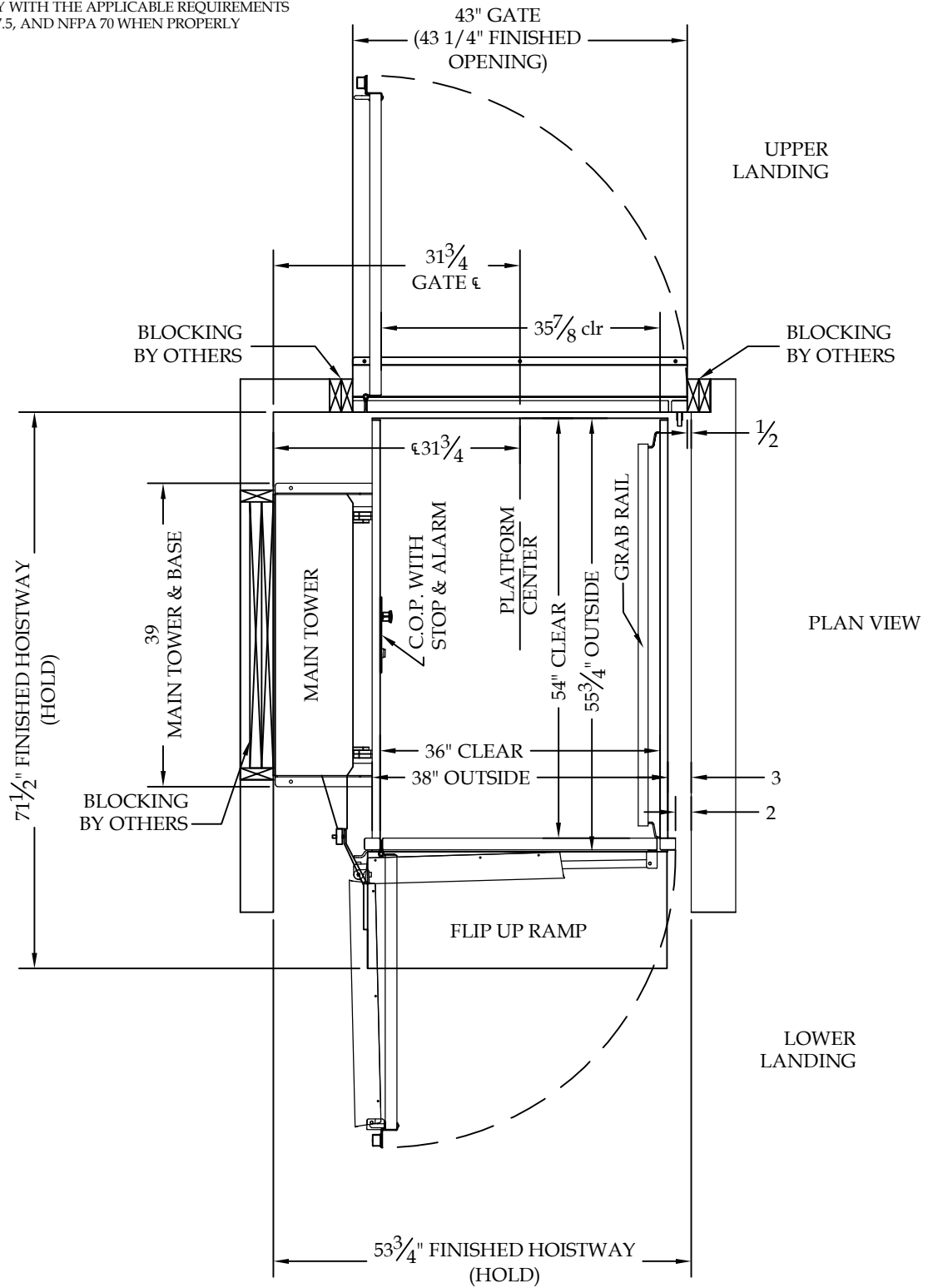
1. FLOOR TO BE SMOOTH AND LEVEL; CONSTRUCTED OF 4" MINIMUM CONCRETE THICKNESS AND 3200 PSI COMPRESSIVE STRENGTH.
2. IF THE CONVEYANCE IS INSTALLED WITHIN A PIT AND IS IN AN OUTDOOR APPLICATION, THE PIT MUST BE PROVIDED WITH AN ADEQUATE DRAIN, HOISTWAY WALLS MUST BE PLUMB, SQUARE, AND TURN-OVER FINISHED BEFORE UNIT INSTALLATION.
3. UPPER AND LOWER DOORS OR GATES MUST BE INSTALLED FLUSH TO THE INTERIOR OF THE HOISTWAY.
4. 80 INCH MINIMUM HEAD CLEARANCE IS REQUIRED THROUGHOUT TRAVEL.
5. HOISTWAY LIGHTING IS PROVIDED BY OTHERS. SIGC REQUIRED ON THE PLATFORM SURFACE THROUGHOUT TRAVEL. AN AUXILIARY LIGHT CONSISTING OF NO MORE THAN 2 LAMPS PRODUCING 2FTC ON THE FLOOR AND CONTING FOR NOT LESS THAN 4 HOURS, AND ACTIVATED AUTOMATICALLY IN THE EVENT OF A POWER OUTAGE.
6. MAIN TOWER MUST BE FASTENED TO THE WALL AND FLOOR WITH ANCHORS SUITABLE TO THE SITE CONDITIONS, AND CAPABLE TO WITHSTAND THE FORCES PLACED UPON THEM.
7. ALL BLOCKING IS PROVIDED BY OTHERS.
8. THE DISCONNECT (PROVIDED BY OTHERS) SHALL BE A LISTED DEVICE CONFORMING TO NETA 70 / NFCA 6203 AND SHALL BE INSTALLED WITHIN SIGHT OF THE MOTOR CONTROLLER. THE DISCONNECTING MEANS SHALL BE EXTERNALLY OPERABLE, HAVE PERMANENT MEANS OF LOCKING THE DEVICE IN THE OPEN POSITION, AND BE LABELED WITH THE LOCATION OF THE SUPPLY SIDE OVERCURRENT PROTECTION MEANS.

THIS SYMMETRY VERTICAL PLATFORM LIFT IS DESIGNED AND MANUFACTURED TO COMPLY WITH THE APPLICABLE REQUIREMENTS IN ASME A18.1-2020, ASME A17.5, AND NFPA 70 WHEN PROPERLY INSTALLED AND EQUIPPED.



	EDCO ELEVATOR	
	VERTICAL PLATFORM LIFT, MODEL: VPL UL-42	SCALE: N/A
DRAWN BY: CR	DATE: 08/21/24	DRAWING NUMBER: 082124-V02
JOB INFORMATION: SPRINGHILL RECREATION CENTER	REV.: 0	

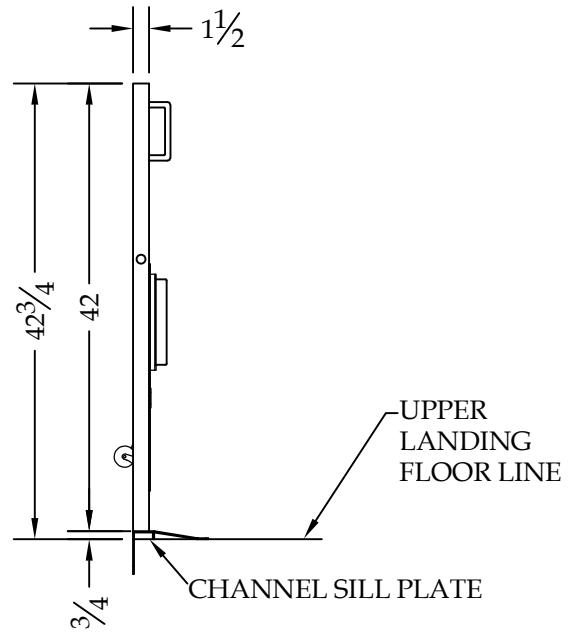
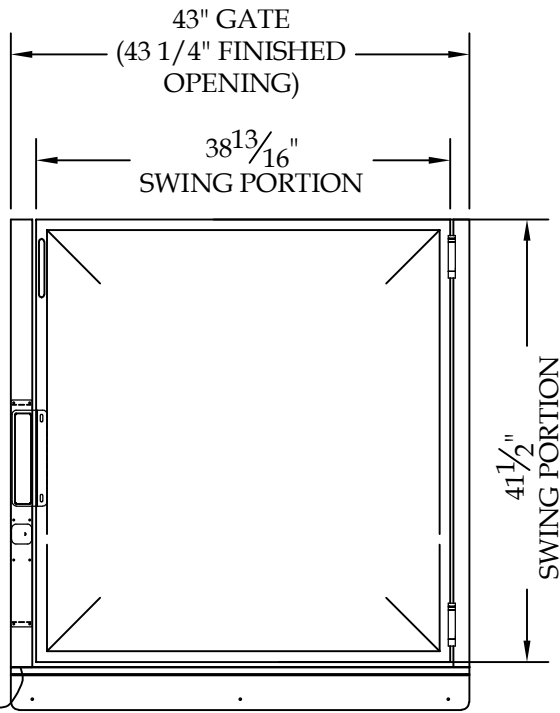
THIS SYMMETRY VERTICAL PLATFORM LIFT IS DESIGNED AND MANUFACTURED TO COMPLY WITH THE APPLICABLE REQUIREMENTS IN ASME A18.1-2020, ASME A17.5, AND NFPA 70 WHEN PROPERLY INSTALLED AND EQUIPPED.



CONSTRUCTION NOTES:

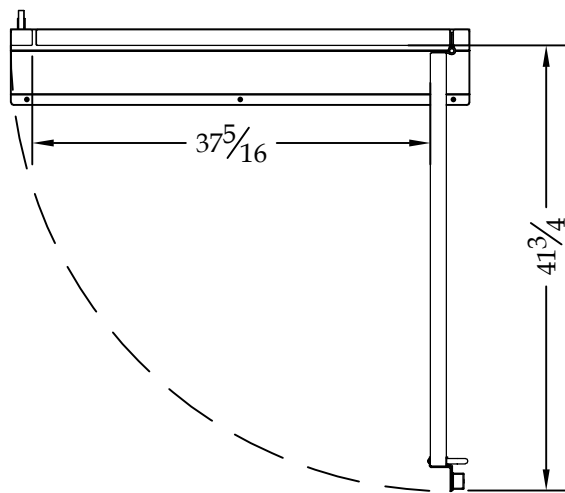
1. FLOOR TO BE SMOOTH AND LEVEL; CONSTRUCTED OF 4" MINIMUM CONCRETE THICKNESS AND 3200 PSI COMPRESSIVE STRENGTH.
2. IF THE CONVEYANCE IS INSTALLED WITHIN A PIT AND IS IN AN OUTDOOR APPLICATION, THE PIT MUST BE PROVIDED WITH AN ADEQUATE DRAIN.
3. HOISTWAY WALLS MUST BE PLUMB, SQUARE, AND TURNOVER FINISHED BEFORE UNIT INSTALLATION.
4. UPPER AND LOWER DOORS OR GATES MUST BE INSTALLED FLUSH TO THE INTERIOR OF THE HOISTWAY.
5. 80 INCH MINIMUM HEAD CLEARANCE IS REQUIRED THROUGHOUT TRAVEL.
6. HOISTWAY LIGHTING IS PROVIDED BY OTHERS. 5FTC REQUIRED ON THE PLATFORM SURFACE THROUGHOUT TRAVEL. AN AUXILIARY LIGHT CONSISTING OF NO FEWER THAN 2 LAMPS PRODUCING .2FTC ON THE FLOOR AND CONTROLS FOR NOT LESS THAN 4 HOURS, AND ACTIVATED AUTOMATICALLY IN THE EVENT OF A POWER OUTAGE.
7. MAIN TOWER MUST BE FASTENED TO THE WALL AND FLOOR WITH ANCHORS SUITABLE TO THE SITE CONDITIONS, AND CAPABLE TO WITHSTAND THE FORCES PLACED UPON THEM.
8. ALL BLOCKING IS PROVIDED BY OTHERS.
9. THE DISCONNECT (PROVIDED BY OTHERS) SHALL BE A LISTED DEVICE CONFORMING TO NFPA 70 / NEC 620.51 AND SHALL BE INSTALLED WITHIN SIGHT OF THE MOTOR CONTROLLER. THE DISCONNECTING MEANS SHALL BE EXTERNALLY OPERABLE, HAVE PERMANENT MEANS OF LOCKING THE DEVICE IN THE OPEN POSITION, AND BE LABELED WITH THE LOCATION OF THE SUPPLY SIDE OVERCURRENT PROTECTION MEANS.


		EDCO ELEVATOR	
		VERTICAL PLATFORM LIFT, MODEL:	
VPL UL-42		SCALE:	
		N/A	
DRAWN BY:	DATE:	DRAWING NUMBER:	REV.:
CR	08/21/24	082124-V02	0
JOB INFORMATION:			
SPRINGHILL RECREATION CENTER			




10 ft OF WIRE OUT
BOTTOM OF STRIKE POST

UPPER LANDING GATE



 SYMMETRY		EDCO ELEVATOR	
VERTICAL PLATFORM LIFT, MODEL: VPL UL-42			SCALE: N/A
DRAWN BY: CR	DATE: 08/21/24	DRAWING NUMBER: 082124-V02	REV.: 0
JOB INFORMATION: SPRINGHILL RECREATION CENTER			

STANDARD FEATURES					
CAPACITY: 750 LBS.		MANUAL LOWERING WRENCH			
SPEED: 10 FPM		1 1/4" ROUND GRAB RAIL			
ILLUMINATED EMERGENCY STOP WITH ALARM		LED DIAGNOSTICS			
TOP MOUNTED MOTOR AND CONTROLLER		ETL LISTED CONTROLLER			
TOP CAP SWITCH		PLATFORM WITH NON-SLIP SURFACE			
ELECTRICAL DATA					
POWER SUPPLY	VOLTAGE	AMPERAGE	PHASE		
	115	30 AMP	1 PHASE		
DESIGN SPECIFICATIONS					
DRIVE: ACME SCREW, SELF LOCKING		LANDINGS SERVICED: 2			
EXIT CONFIGURATION: STRAIGHT THROUGH		TOWER LOCATION: LEFT HAND			
PIT 0"	TRAVEL: 39"	TOTAL ELEVATION CHANGE: 39"			
UPPER ENTRY: LEFT HAND LANDING GATE		LOWER ENTRY: RIGHT HAND PLATFORM GATE			
MID ENTRY: N/A					
INTERLOCKS:	UPPER: STD	MID: N/A	LOWER: STD		
CALLS:	UPPER: SURFACE MOUNT	MID: N/A	LOWER: SURFACE MOUNT		
CLEAR FLOOR SIZE: 36" X 54" WITH NON-SLIP SURFACE					
INDOOR/OUTDOOR: OUTDOOR					
COLOR: IVORY					
OTHER OPTIONAL EQUIPMENT:					
FLIP UP RAMP, SAFETY PAN,					
UPPER GATE: CHANNEL SILL PLATE w/ 10 ft OF ALL WIRE OUT BOTTOM,					
LOWER: MID-MOUNT OPERATOR, OUTDOOR ADA PHONE,					
KEY SWITCHES ON ALL CONTROLS, CALL/SEND LANDING CONTROLS					
		 EDCO ELEVATOR			
		VERTICAL PLATFORM LIFT, MODEL: VPL UL-42		SCALE: N/A	
		DRAWN BY: CR	DATE: 08/21/24	DRAWING NUMBER: 082124-V02	REV.: 0
		JOB INFORMATION: SPRINGHILL RECREATION CENTER			

THIS SYMMETRY VERTICAL PLATFORM LIFT IS DESIGNED AND MANUFACTURED TO COMPLY WITH THE APPLICABLE REQUIREMENTS IN ASME A18.1-2020, ASME A17.5, AND NFPA 70 WHEN PROPERLY INSTALLED AND EQUIPPED.

GENERIC STATIC LOADING TABLE FOR VERTICAL PLATFORM LIFTS ANCHORED TO FLOOR AND THE WALL

(These calculations are based upon the new leg design being implemented in 7/15.)

SYMBOL	DESCRIPTION	VALUE (MAX)
F1 = 1090 LB	PAYLOAD (MAX)	750 LB
	CAR (PLATFORM) WT.MAX	340 LB
F2	SHROUD WEIGHT	SEE CHART
F3	FLOOR REACTION (INBOARD)	SEE CHART
F4	FLOOR REACTION (OUTBOARD)	SEE CHART
F5	WALL ANCHORING REACTION	SEE CHART
F6	ENCLOSURE WEIGHT *	SEE CHART
F7	FLOOR SHEAR REACTION	SEE CHART

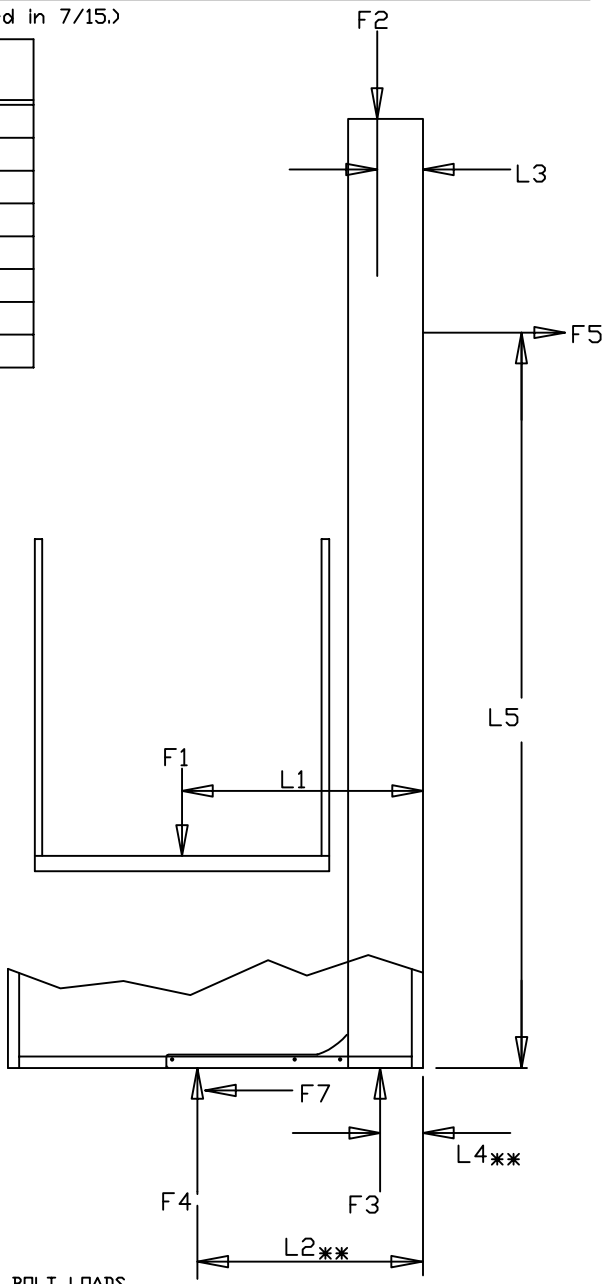
* NOTE: The enclosure weight is transferred directly to the floor along it's perimeter through pads (two to a side) except for the back side where the wing walls bolt up directly to the tower.

LAYOUT GEOMETRY			
L1	L2 **	L3	L4 **
33.156	33.75	5.25	5.0

MODEL	SHROUD HEIGHT	APPROXIMATE ANCHOR HEIGHT (L5)
42	67	43.88

NOTE: These are the reaction forces based on the gravity loads and operation of the lift. These calculations do not include external loading due to such things as wind, snow, rain, seismic activity, etc. Adhere to local building codes, regulations, and safety factors for the supporting structures.

STATIC EQUILIBRIUM:
 [SUM OF FORCES AND SUM OF MOMENTS = 0]
 $F1 + F2 = F3 + F4$
 $F7 = F5$
 $F5 * L5 + F4 * L2 + F3 * L4 = F2 * L3 + F1 * L1$



VALUES BELOW ARE TOTALS-DIVIDE BY THE NUMBER OF BOLTS FOR INDIVIDUAL BOLT LOADS

MODEL	MAX SHROUD WT. (LBS)	INBOARD FLOOR REACTION (LBS)	OUTBOARD FLOOR REACTION (LBS)	WALL REACTION (LBS)	MAX ENCLOSURE WT. (LBS)*		FLOOR SHEAR REACTION (LBS)
	F2	F3 **	F4 **	F5 **	STEEL F6	PLEXI	F7 **
42	446	1536	0	702	497	437	702

* ON ENCLOSURES, ADD 175# FOR A ROOF OPTION AND ADD 161# FOR A 6'-8" ABOVE OPTION

**The reaction force values are based upon using an approximate horizontal mid-point location on the base as the point of action for the floor reaction. In reality there is a load distribution across the base plate versus a single point load. This distribution will vary by unit size, platform size and position, etc. The assumption of a point load based on the centroid of a distributed load, however, does appear to provide reasonable results. We have chosen locations of the lines of action of reaction forces based upon the applicable geometry of the components and also based on multiple FEA structural analysis runs which provide support for those choices. We also assume the outboard floor bolt reaction forces go to zero, and this assumption provides a conservative approach and is supported by multiple FEA runs.

symmetry		EDCO ELEVATOR	
VERTICAL PLATFORM LIFT, MODEL:			SCALE:
VPL UL-42			N/A
DRAWN BY:	DATE:	DRAWING NUMBER:	REV.:
CR	08/21/24	082124-V02	0
JOB INFORMATION:			
SPRINGHILL RECREATION CENTER			

Generic Drawing Packet Instructions

Ascension has pre-prepared this drawing packet for a commonly selected lift configuration. In most situations, this generic drawing packet will be sufficient for the project bidding process. Upon notification that the project was awarded, or upon request, Ascension will closely review the project to determine the exact lift configuration to be ordered and will provide an updated project-specific drawing packet.

To expedite updating the drawing packet, please provide Ascension with all applicable application information available (architectural drawings, photos, etc.). In addition, it is strongly encouraged that the installer markup this generic drawing packet with any desired changes. Typically, most changes will be made to the options configuration table on Sheet 3. However, designated locations on the drawing are provided for required information:

Customer/Installer Required information:

- | | |
|-------------------|-----------|
| 1. Lifting Height | (Sheet 1) |
| 2. Door Handings | (Sheet 2) |

Common Review Notes- Ascension Protégé

Description: Below are notes that Ascension commonly provides during project reviews. Please review the notes and address them where applicable.

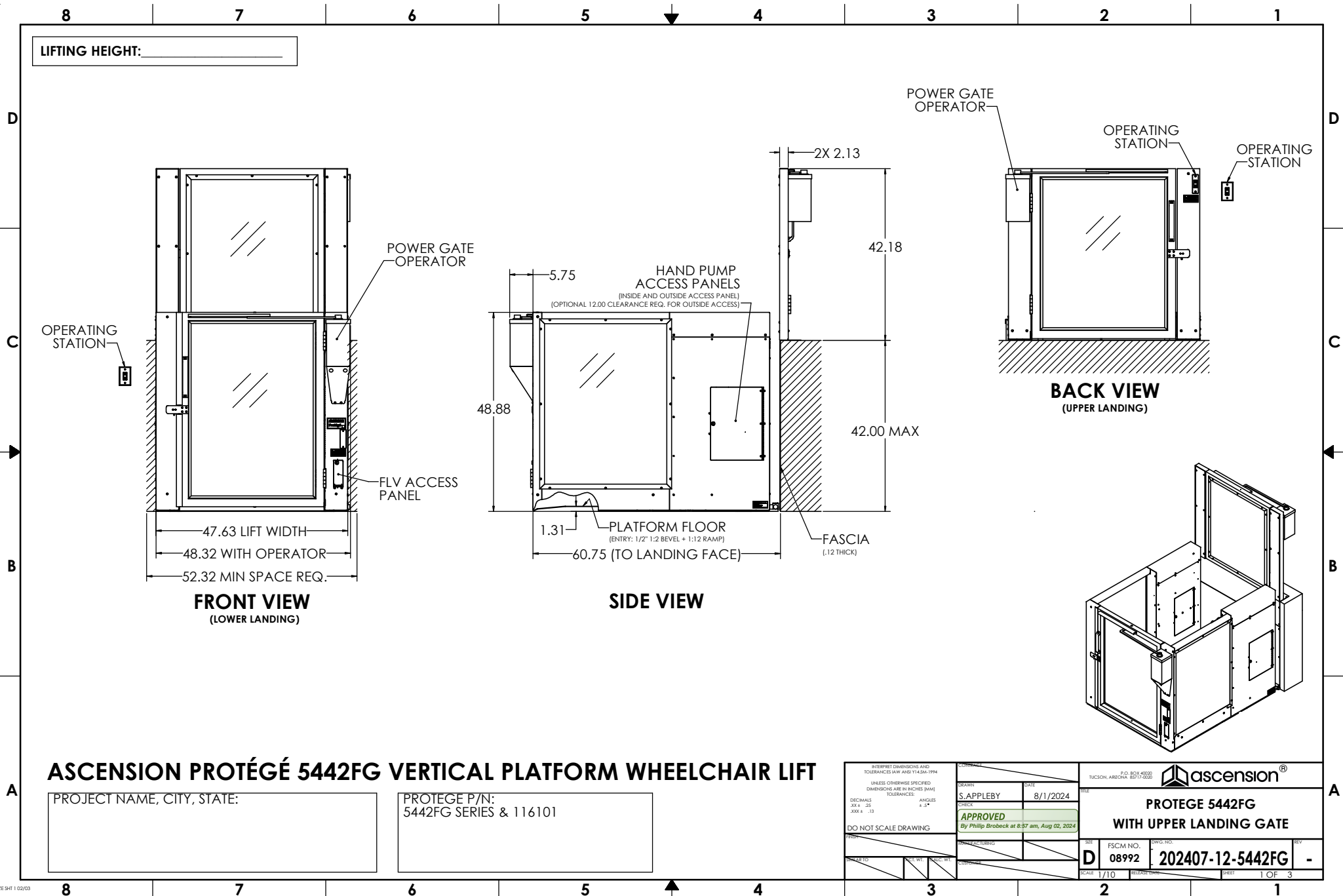
See “CLEARANCES” drawing from drawing packet. Manual doors require maneuvering space for users to be able to open them. Automatic doors just require enough space for the user to enter the lift. Automatic doors also typically require remotely mounted operating stations so the user may trigger the automatic door without getting hit by the door as it opens.

See “CLEARANCES” drawing from the drawing packet. The only objects allowed within 12” of the platform are smooth, unperforated vertical surfaces which do not pose shearing/crushing hazards. Please ensure any adjacent stair railings (or similar) do not pose such a hazard.

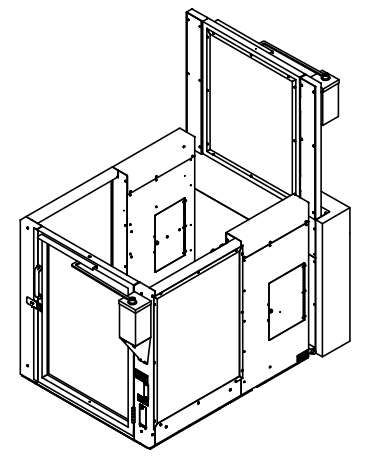
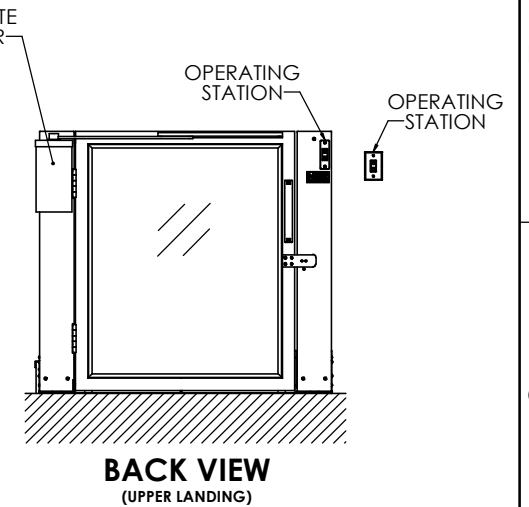
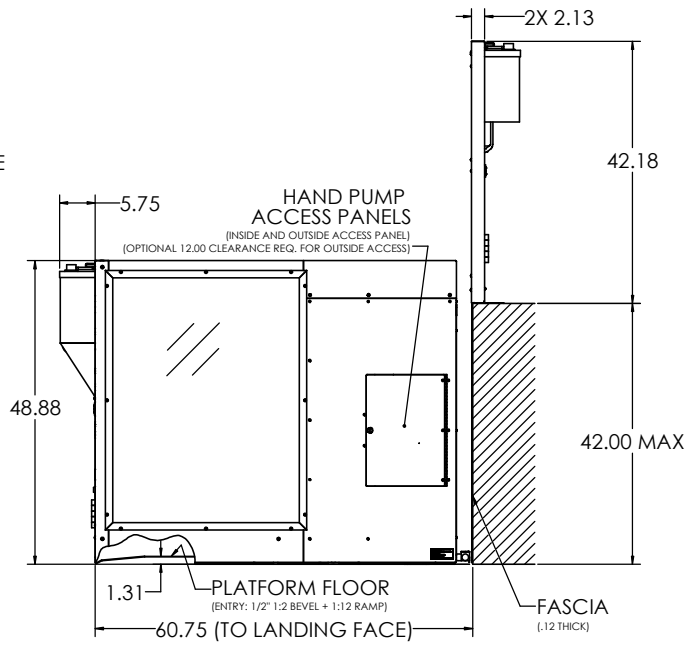
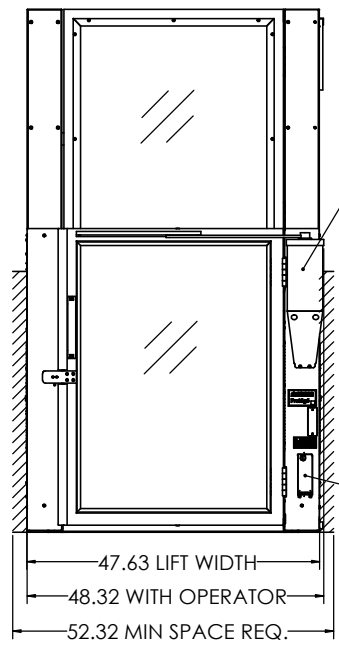
Generally, if the lift location is not normally occupied when the site is in use, two-way communication (hands-free phone) must be provided.

Where provided, the battery backup option is NOT rated for outdoor installation. Backup unit must be located indoors even when supplying a lift that is outdoors.

PRELIMINARY DRAWING: EXACT OPTIONS QUOTED MAY DIFFER FROM COMMON CONFIGURATION SHOWN; REFER TO QUOTE MARKUP DRAWING (SHEETS 1-3) WITH ANY DESIRED CHANGES AND UPDATED DRAWING WILL BE PROVIDED UPON ORDER OR REQUEST



LIFTING HEIGHT: _____

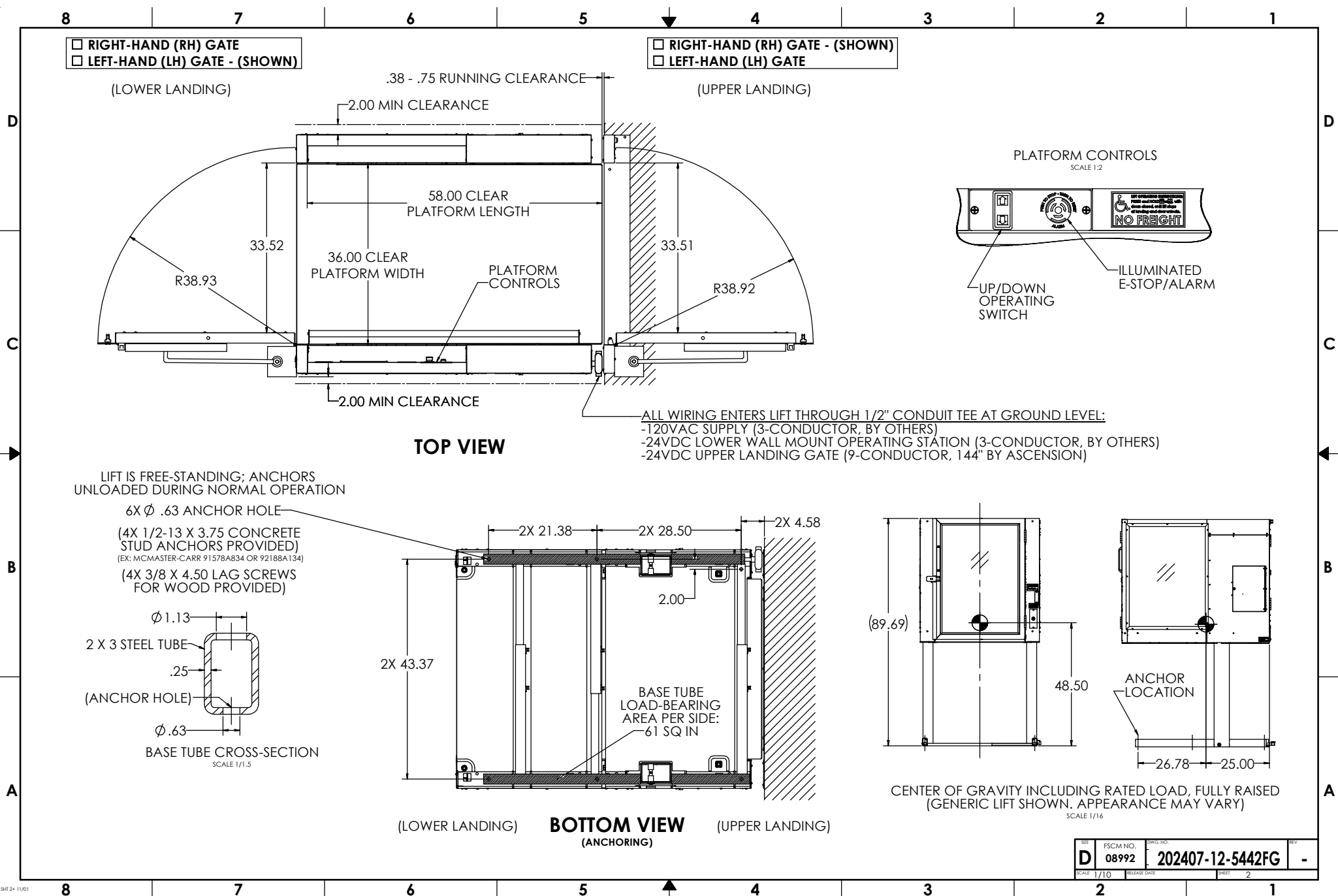


ASCENSION PROTÉGÉ 5442FG VERTICAL PLATFORM WHEELCHAIR LIFT

PROJECT NAME, CITY, STATE:

PROTEGE P/N:
5442FG SERIES & 116101

<small>INTERPRET DIMENSIONS AND TOLERANCES IN ACCORDANCE WITH ASME Y14.5M-1994 UNLESS OTHERWISE SPECIFIED DIMENSIONS ARE IN INCHES (MM) TOLERANCES ANGLES ± .4° DECIMALS .004 ± .03 XXX ± .13</small>	<small>DRAWN</small> S. APPLEBY	<small>DATE</small> 8/1/2024	
	<small>CHECKED</small> APPROVED By Phillip Brobeck at 8:57 am, Aug 02, 2024	<small>DATE</small> 8/1/2024	
<small>DO NOT SCALE DRAWING</small>			PROTEGE 5442FG WITH UPPER LANDING GATE
<small>SCALE</small> 1/10	<small>FSCM NO.</small> D 08992	<small>DWG. NO.</small> 202407-12-5442FG	<small>REV</small> -
<small>SCALE 1/10</small>			<small>SHEET 1 OF 3</small>



REV	FSCM NO.	DWG. NO.	REV
D	08992	202407-12-5442FG	-
SCALE 1/10	RELEASE DATE	SHEET 2	

8 7 6 5 4 3 2 1

CONFIGURATION

TOTAL TRAVEL	UP TO 42.00"
ENTRY/EXIT CONFIG.	STRAIGHT THROUGH

LOWER LANDING	
DOOR TYPE	PLATFORM GATE
HANDING	(SEE SHEET 2)
DOOR OPERATOR	YES
CALL STATION TYPE*	WALL MOUNT
CALL STATION KEYED	NO

UPPER LANDING	
DOOR TYPE	LANDING GATE
HANDING	(SEE SHEET 2)
DOOR OPERATOR	YES
CALL STATION TYPE	WALL MOUNT
CALL STATION KEYED	NO

PLATFORM	
KEY SWITCH	NO
HANDS-FREE PHONE	YES
AUXILIARY LIGHTING	NO
GRAB BAR	STANDARD
SLIP-RESISTANT FLOOR	STANDARD

OUTDOORS	NO
PIT SWITCH	STANDARD
AUDIBLE ALARM	STANDARD
UNDER-PLATFORM SAFETY PAN	STANDARD
CALIFORNIA SAFETY PAN MODIFICATION	NO
ACCESS PANELS (4X)	STANDARD
HAND PUMP	STANDARD
FRONT LOWERING VALVE (FLV)	STANDARD
EXTERNAL BATTERY BACKUP UNIT (UPS)	YES

*WALL MOUNT (NOT FRAME MOUNT) REQUIRED IF TRAVEL EXCEEDS 30" OR LOWER DOOR OPERATOR OPTION SELECTED.

SPECIFICATIONS

DESCRIPTION	VERTICAL PLATFORM WHEELCHAIR LIFT
CODE COMPLIANCE	ASME A18.1, ASME A17.5, NFPA 70 (NEC), ANSI A117.1, ADASAD (ADAAG)
APPLIED VERSION	ASME A18.1-2020
MODEL	PROTEGE 5442FG
UNIT WEIGHT	850 LB
RATED LOAD	900 LB
RATED SPEED	5 FT/MIN
DUTY CYCLE	S2: 20 MIN SINGLE RUN S3: 13% INTERMITTENT RUN
PLATFORM SIZE	36" X 58"
POWER SUPPLY	24VDC, 1.75A (42W)
CONTROL SYS.	24VDC
MOTOR	115VAC, 1/2 HP

DRIVING MEANS	DIRECT-PLUNGER HYDRAULIC
PLUNGER (2X)	1.125" SOLID
CYL. I.D.	2.75" MASTER, 2.50" SLAVE
CYL. O.D.	3.13" MASTER, 2.88" SLAVE
STROKE (2X)	41.5"
SAFETIES TYPE	NONE (IAW ASME A18.1 §2.8.8)

WORKING PSI	400 PSI
RELIEF PSI	600 PSI (1.5 X WP)

DOOR LOCKS	IDEC HS5L
------------	-----------

CONFIGURATION: FINISHES

LIFT COLOR (POWDER COAT)	<input checked="" type="checkbox"/> BLACK (STANDARD) <input type="checkbox"/> SILVER <input type="checkbox"/> CUSTOM: _____
HARDWARE COLOR	<input checked="" type="checkbox"/> SILVER (STANDARD) <input type="checkbox"/> BLACK <input type="checkbox"/> BRASS <input type="checkbox"/> OIL RUBBED BRONZE
WINDOWS	<input checked="" type="checkbox"/> CLEAR PLEXIGLAS (STANDARD) <input type="checkbox"/> TINTED PLEXIGLAS (30%) <input type="checkbox"/> FROSTED PLEXIGLAS <input type="checkbox"/> POWDER COATED STEEL
WINDOW ART	<input checked="" type="checkbox"/> NONE (STANDARD) <input type="checkbox"/> CUSTOM LOGO/IMAGE

PROVISIONS BY OTHERS

GENERAL

HOISTWAY: FINISHED VERTICAL LANDING FACE (WITH FASCIA) MUST BE SQUARE AND PLUMB WITHIN 1/4" TO ENSURE PROPER LIFT OPERATION. WHERE ANY PERMANENT STRUCTURE IS WITHIN 12" OF EITHER SIDE OF THE LIFT, IT MUST BE DESIGNED AND BUILT IN ACCORDANCE WITH ASME A18.1 AND ALL APPLICABLE STATE AND LOCAL CODES.

FLOOR: FLOOR BENEATH UNIT AND DOOR SWINGS MUST BE FLAT AND LEVEL WITHIN 1/8" AND CAPABLE OF SUPPORTING UNIT WEIGHT WITH RATED LOAD. OUTDOORS, DRAINAGE SHALL NOT FLOW THROUGH OR INTO UNIT.

PIT/RAMP: UNLESS OTHERWISE SPECIFIED, DO NOT PROVIDE PIT OR RAMP. LIFT DESIGNED WITH LOW-PROFILE PLATFORM FLOOR FOR DIRECT ENTRY.

OVERHEAD CLEARANCE: MUST COMPLY WITH ALL APPLICABLE CODES.

CONSTRUCTION COORDINATION: OWNER/AGENT RESPONSIBLE FOR ALL MASONRY, CARPENTRY, DRYWALL, PATCHING, AND FINISHING WORK NEEDED PRIOR TO AND FOLLOWING LIFT INSTALLATION.

ELECTRICAL

GENERAL: ALL WIRING SHALL COMPLY WITH NFPA 70 (NEC).

POWER: 120VAC, 60HZ, 13A, 1PH CIRCUIT WITH DISCONNECT (SEE BELOW).

MAIN DISCONNECT SWITCH: OTHERS SHALL PROVIDE LOCKABLE FUSED DISCONNECT SWITCH IAW NFPA 70 (SECTION 620.51).

LIGHTING: 54 LX MIN AT PLATFORM AND LANDINGS.

EMERGENCY LIGHTING: 2.2 LX MIN AT PLATFORM AND CONTROLS (4 HOURS MIN) (WHERE NOT PROVIDED BY "AUXILIARY LIGHTING" OPTION).

PHONE: STANDARD PHONE CABLE WITH RJ11 RECEPTACLE CONNECTOR REQUIRED FOR OPTIONAL (ANALOG) HANDS-FREE PHONE, WHERE PROVIDED.

INSTALLATION FEATURES

TRANSPORTABILITY: DISPOSABLE CASTERS INCLUDED TO WHEEL LIFT TO PERMANENT INSTALL LOCATION.

COMPRESSIBILITY: LIFT COMPRESSIBLE TO 33" TO FIT THROUGH DOORWAYS.

REV	FSCM NO.	DWG. NO.	REV
D	08992	202407-12-5442FG	-
SCALE	1/10	RELEASE DATE	SHEET 3

4

3

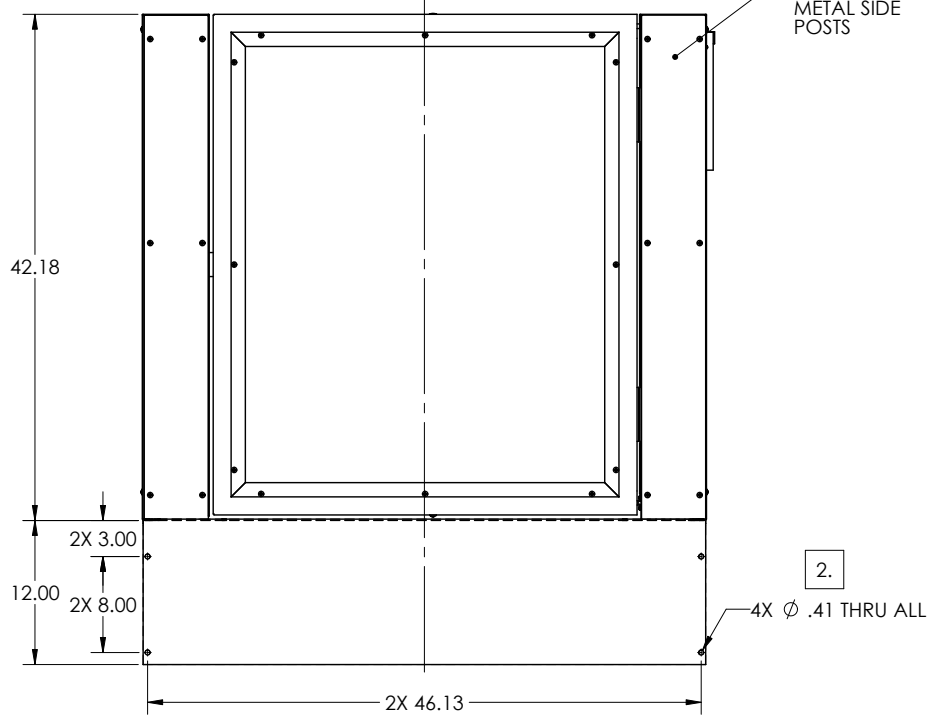
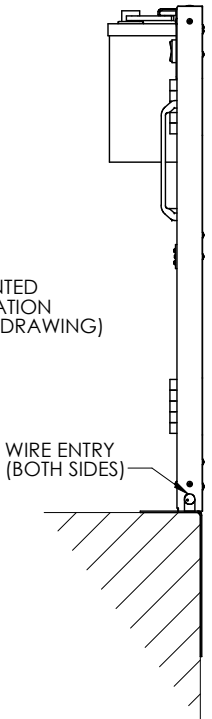
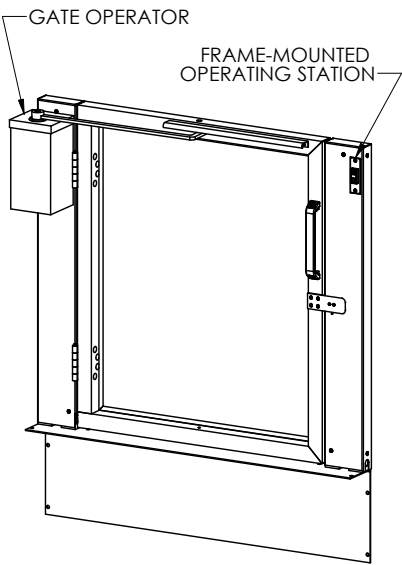
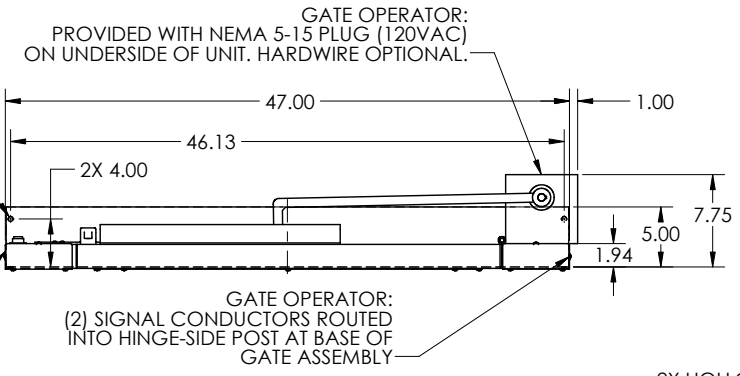
2

1

NOTES UNLESS OTHERWISE SPECIFIED:

- 1. DESCRIPTION: UPPER LANDING GATE (ULG) WITH INTERLOCK AND POWER DOOR OPERATOR. ("RH" HANDING GENERICALLY SHOWN; MAY NOT BE SAME AS SPECIFIED ON LIFT; MIRROR FOR "LH" HANDING).
- 2. GATE FRAME MUST BE ANCHORED TO LANDING SILL USING ANCHOR HOLES SHOWN. ANCHORS TO BE PROVIDED BY OTHERS.
- 3. GATE FRAME MUST BE ATTACHED TO NEARBY WALLS/RAILINGS TO ENSURE FULL STRENGTH AND RIGIDITY. FASTENING MEANS TO BE PROVIDED BY OTHERS.
- 4. ASSEMBLY INCLUDES:
 - POWER DOOR OPERATOR
 - REMOTE-MOUNTED OPERATING STATION
 - FRAME-MOUNTED OPERATING STATION
 - COVER PLATE (TO OPTIONALLY REPLACE FRAME-MOUNTED OPERATING STATION)

REVISIONS				
ZONE	LTR.	DESCRIPTION	DATE	APPROVED



"RH" HANDING GENERICALLY SHOWN (MAY NOT BE SAME AS SPECIFIED ON LIFT) SCALE: 1/12

INTERPRET DIMENSIONS AND TOLERANCES IAW ANSI Y14.5M-1994				CONTRACT	
UNLESS OTHERWISE SPECIFIED DIMENSIONS ARE IN INCHES				DRAWN	
TOLERANCES:				DATE	
DECIMALS		ANGLES		S.APPLEBY	
.XX ± .13		± .5°		5-14-20	
.XXX ± .063				CHECK	
DO NOT SCALE DRAWING				APPROVED	
FINISH:				By Philip Brobeck at 4:47 pm, May 14, 2020	
PART DASH NO.				MANUFACTURING	
NEXT				CUSTOMER	
FINAL					
NEXT ASSY.					
USED ON					
SIMILAR TO					
ACT. WT.					
CALC. WT.					

CGM CONTAINER CONTROLS, INC.			
P.O. BOX 40020 - TUCSON, ARIZONA 85717-0020			
TITLE			
PROTEGE UPPER LANDING GATE			
W/ OPERATOR			
SIZE	FSCM NO.	DWG. NO.	REV
C	08992	113235_OP	-
SCALE	RELEASE DATE	SHEET	1 OF 1
1/8			

4

3

2

1

4

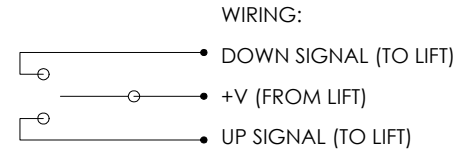
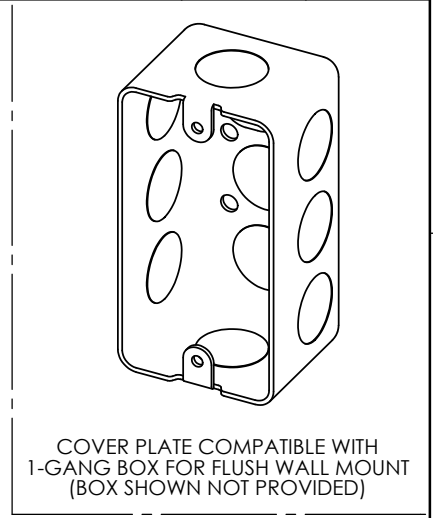
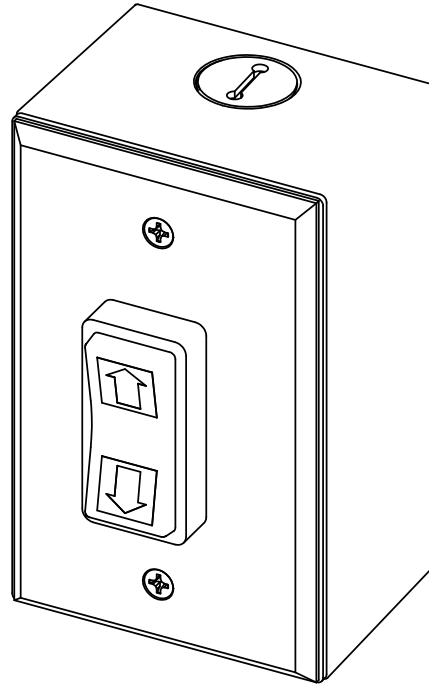
3

2

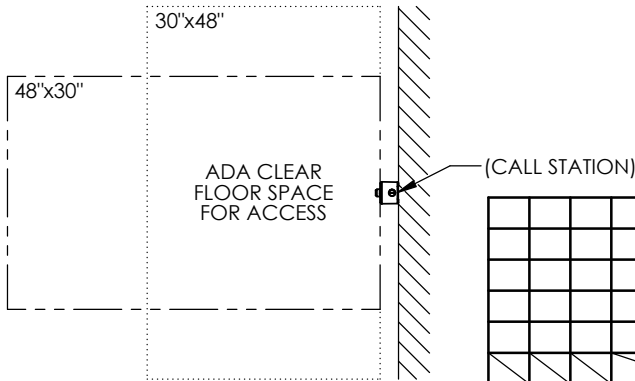
1

NOTES UNLESS OTHERWISE SPECIFIED:

- 1. DESCRIPTION: REMOTELY LOCATED CALL STATION FOR ASCENSION VERTICAL PLATFORM WHEELCHAIR LIFT.
 - 2. CHARACTERISTICS:
 - 2.1 COVER PLATE: STANDARD SIZE WALL PLATE (4.5" X 2.75"), BRUSHED STAINLESS STEEL.
 - 2.2 SWITCH: 3 POSITION ROCKER, REQUIRES CONSTANT PRESSURE TO ACTUATE.
 - 2.3 MOUNTING BOX: SURFACE MOUNT SINGLE GANG HANDY BOX, 2.00" DEEP.
 - 2.4 WEATHER RATING: SUITABLE FOR OUTDOOR USE.
 - 3. ADA REQUIREMENTS:
 - 3.1 MOUNT BETWEEN 15" AND 48" ABOVE FLOOR. IAW ADAAG 308.2 OR 308.3
 - 3.2 PROVIDE 30"x48" OR 48"x30" CLEAR FLOOR SPACE FOR ACCESSING CALL STATION. IAW ADAAG 309.2 & 305
- NOTE: CLEAR FLOOR SPACE MUST BE OUTSIDE SWING OF AUTOMATIC DOORS AND GATES.



(3) 1/4" QUICK-DISCONNECT TERMINALS (PROVIDED)



PART DASH NO.				QTY. REQ'D PER ASSY.				APPLICATION				USED ON				FINISH				SIMILAR TO				ACT. WT.				CALC. WT.			
NEXT				FINAL				NEXT ASSY.																							

INTERPRET DIMENSIONS AND TOLERANCES IAW ANSI Y14.5M-1994
UNLESS OTHERWISE SPECIFIED DIMENSIONS ARE IN INCHES
TOLERANCES:
DECIMALS .XX ± N/A .XXX ± N/A
ANGLES ± N/A
DO NOT SCALE DRAWING

DRAWN		DATE	
S. APPLEYBY		9-16-22	
CHECK			
APPROVED			
By Philip Brobeck at 12:47 pm, Oct 04, 2022			
MANUFACTURING			
CUSTOMER			

AGM CONTAINER CONTROLS, INC.			
P.O. BOX 40020 - TUCSON, ARIZONA 85717-0020			
TITLE OPERATING STATION (CALL BOX) WALL MOUNTED			
SIZE B	FSCM NO. 08992	DWG. NO. 115712	REV. D
SCALE 1/1	RELEASE DATE	SHEET 1 OF 1	

4

3

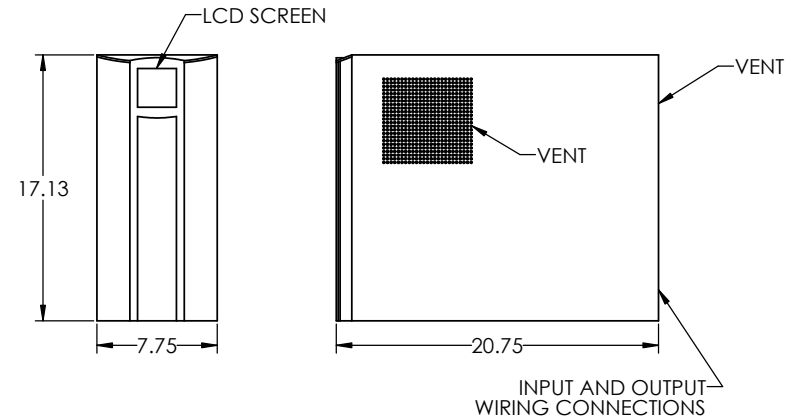
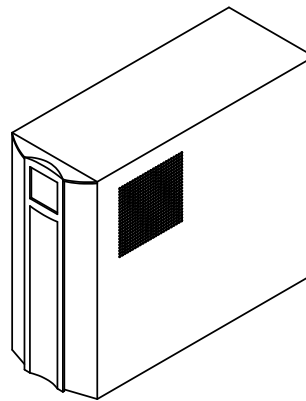
2

1

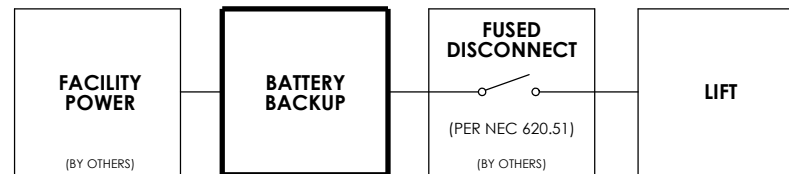
8 7 6 5 4 3 2 1

NOTES UNLESS OTHERWISE SPECIFIED:

1. DESCRIPTION: BATTERY BACKUP FOR ASCENSION LIFTS.
2. OPERATION:
 - 2.1 FOR USE WITH ASCENSION VIRTUOSO AND PROTÉGÉ MODEL WHEELCHAIR LIFTS.
 - 2.2 PROVIDES STANDBY POWER FOR MINIMUM OF 5 FULL LIFTING CYCLES CARRYING LIFT'S RATED LOAD.
 - 2.3 FOR INDOOR USE ONLY.
3. PHYSICAL CHARACTERISTICS:
 - 3.1 MATERIAL: STEEL ENCLOSURE WITH PLASTIC TRIM
 - 3.2 FINISH: POWDER COATED, BLACK
 - 3.3 WEIGHT: 112 LBS
4. SPECIFICATIONS:
 - 4.1 INPUT: 120VAC, 20A, HARDWIRED (FROM FACILITY)
 - 4.2 OUTPUT: 120VAC, 20A, HARDWIRED (TO LIFT)
 - 4.3 BATTERY: SEALED LEAD ACID
5. MAIN DISCONNECT SWITCH SHALL ELECTRICALLY ISOLATE LIFT FROM BACKUP UNIT. SEE DIAGRAM.
6. BACKUP UNIT MAY BE LOCATED REMOTELY FROM LIFT PROVIDED VOLTAGE SUPPLIED AT LIFT IS 120VAC ± 6VAC.
EX: MAX ALLOWABLE CIRCUIT (TO LIFT AND BACK) OF 125 FT OF 12 AWG COPPER WIRE.
7. INSTALLATION SHALL ALLOW BACKUP UNIT'S INTERNAL FAN TO DISSIPATE HEAT GENERATED BY UNIT. ASCENSION RECOMMENDS NO LESS THAN 20 SQ. IN. OPEN VENT AREA FOR INSTALLATIONS IN CONFINED SPACES. UNIT MAY BE INSTALLED ON ITS SIDE (WITH SIDE VENT FACING UP).
8. TO PREVENT PREMATURE FAILURE OF INTERNAL BATTERIES, BACKUP UNIT MUST BE SETUP OR OTHERWISE CHARGED WITHIN THREE (3) WEEKS OF RECEIPT OF THE UNIT.



WIRING DIAGRAM WITH BATTERY BACKUP



<small>INTERPRET DIMENSIONS AND TOLERANCES IN ACCORDANCE WITH ASME Y14.5M-1994 UNLESS OTHERWISE SPECIFIED DIMENSIONS ARE IN INCHES (MM) TOLERANCES ARE: DECIMALS .005 - .250 .005 XXX.X .125 .005 ANGLES ± .4°</small>		<small>DATE</small> 10-26-22	<small>SCALE</small> 1/4"	<small>RELEASE</small> 	<small>REV</small>
<small>DO NOT SCALE DRAWING.</small>		<small>CHECKED</small> 	<small>DATE</small> 	<small>FILE</small> 	
<small>BY Phillip Brobeck at 8:48 am, Nov 10, 2022</small>		<small>APPROVED</small>		<small>ASCENSION</small> 	
<small>SCALE</small> 1/4"		<small>FSCM NO.</small> 08992		<small>DWG. NO.</small> 116101	
<small>SCALE</small> 1/4"		<small>SCALE</small> 1/4"		<small>SHEET</small> 1 OF 1	

8 7 6 5 4 3 2 1

4

3

2

1

NOTES UNLESS OTHERWISE SPECIFIED:

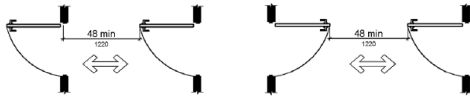
1. THIS DOCUMENT IS INTENDED TO ASSIST IN SITE PLANNING TO ENSURE REQUIRED CLEARANCES FOR LIFT AND REQUIRED ADA ENTRY CLEARANCES ARE PROVIDED.

2. ALL CLEARANCES SHOWN ARE THE **MINIMUM** CLEARANCES REQUIRED. OVERALL DIMENSIONS PROVIDED FOR MOST COMMONLY USED CONFIGURATION.

NOTE: FOR NON-DIMENSIONED CLEARANCES, THE DIFFERENCE IS PROVIDED IN PARENTHESIS. EX: (+6), (-18), ETC.

3. ONLY ONE OF THE THREE ADA-REQUIRED ENTRY CLEARANCES SHOWN AT EACH LANDING MUST BE PROVIDED. MIRROR ENTRY CLEARANCE FOR OPPOSITE DOOR SWING. ENTRY CLEARANCE ALLOWED TO BE OFFSET UP TO 8" MAXIMUM FROM THE FACE OF THE DOOR (FOR WHEN DOOR IS RECESSED).

NOTE: ADDITIONAL CLEARANCE REQUIRED FOR DOORS IN SERIES; CLEARANCE OF 48" REQUIRED BETWEEN OPEN DOORS (SO EACH DOOR MAY BE NAVIGATED INDIVIDUALLY).

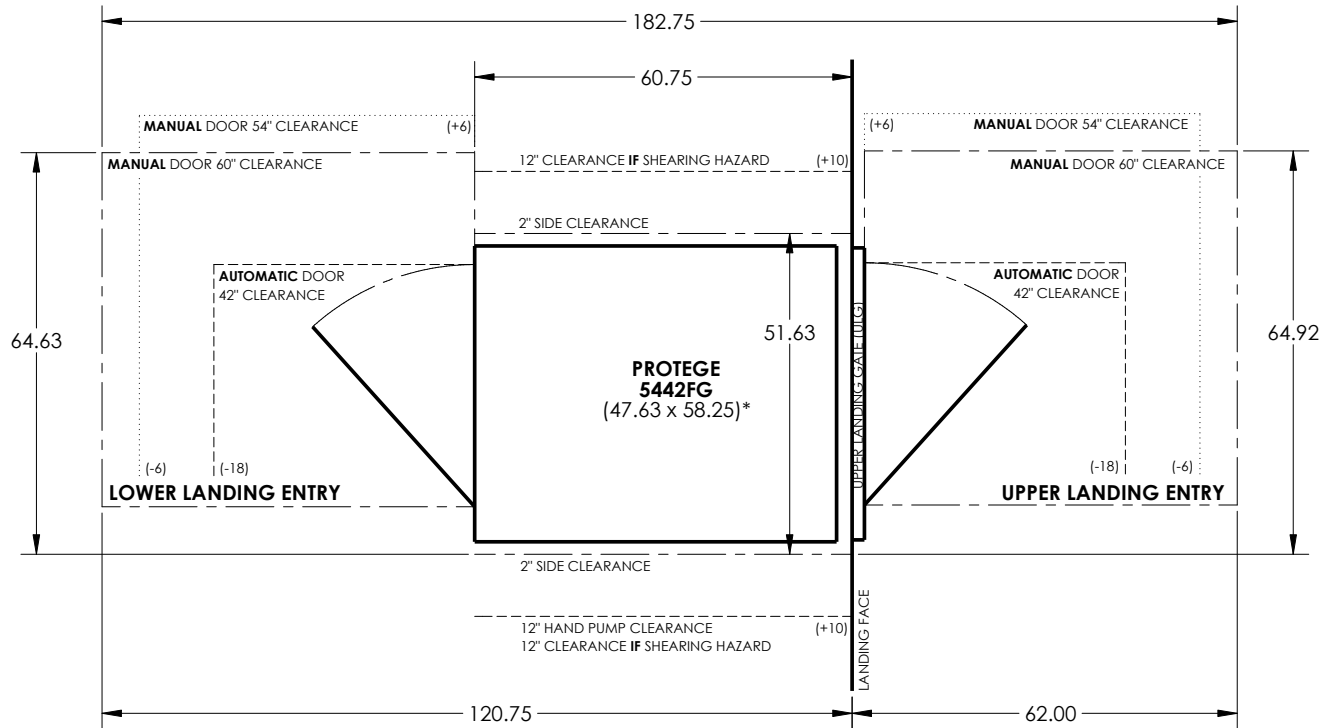


4. HAND PUMP CLEARANCE OPTIONAL. (MANUAL LOWERING PROVIDED BY FLV).

5. THE ONLY OBJECTS ALLOWED WITHIN 12" OF THE PLATFORM ARE SMOOTH, UNPERFORATED VERTICAL SURFACES WHICH DO NOT POSE SHEARING/CRUSHING HAZARDS. THIS APPLIES THROUGHOUT ENTIRE REQUIRED VERTICAL CLEARANCE (SEE NEXT NOTE).

6. REQUIRES OVERHEAD CLEARANCE OF 80" ABOVE PLATFORM FLOOR AT UPPER LANDING.

REVISIONS				
ZONE	LTR.	DESCRIPTION	DATE	APPROVAL



*AUTOMATIC DOOR OPERATORS INCREASE OVERALL LIFT/ULG WIDTH (AND REQUIRED WIDTH CLEARANCE) BY 0.69"

INTERPRET DIMENSIONS AND TOLERANCES IAW ANSI Y14.5M-1994 UNLESS OTHERWISE SPECIFIED DIMENSIONS ARE IN INCHES TOLERANCES: DECIMALS .XX ± N/A ANGLES ± N/A .XXX ± N/A DO NOT SCALE DRAWING				CONTRACT NO. DRAWN S. APPLEBY DATE 2-29-24 CHECK APPROVED By Philip Brobeck at 3:24 pm, Feb 29, 2024		AGM CONTAINER CONTROLS, INC. P.O. BOX 40020 - TUCSON, ARIZONA 85717-0020	
PART DASH NO. NEXT FINAL NEXT ASSY. USED ON QTY. REQ'D PER ASSY. APPLICATION				TITLE REQUIRED CLEARANCES FOR PROTEGE 5442FG		SIZE B FSCM NO. 08992 DWG. NO. PROTEGE 5442FG CLEARANCES REV. A	
SIMILAR TO ACT. WT. CALC. WT.				MANUFACTURING CUSTOMER		SCALE 1/20 RELEASE DATE SHEET 1 OF 1	

4

3

2

1