



To: Potential Bidders

From: WAS Design, Inc.
256 Wacker Ln. North
Mobile, Alabama 36608
251-344-4023

Re: Crawford-Murphy Park and Stotts Park Pickleball Courts
Project No: PR-035-23/PR-047-23

This Addendum forms a part of, and modifies, the Contract Documents for the above referenced project. Acknowledge the receipt of this Addendum and all subsequent Addenda, if any, in the space provided on the Bid Form. Failure to do so may subject Bidder to disqualification.

Addendum No. 3 – Nov. 28, 2023

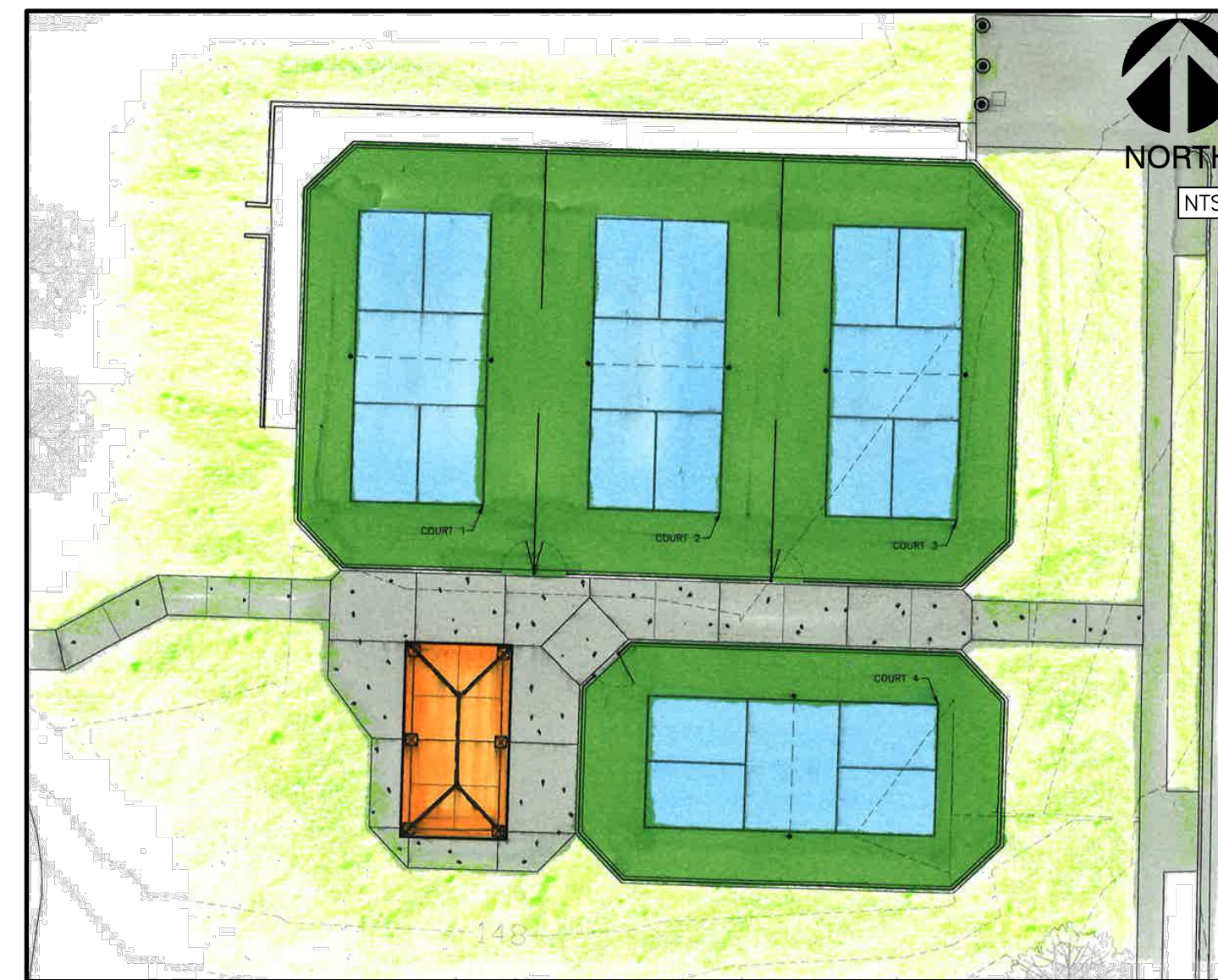
- Item No. 1: Delta 2 Addendum 3: Drawings: Pavilion specification and site adjustment Stotts Park set. Changes Clouded as Delta 2
CS100 Cover Sheet
LS100 Site Plan
LG100 Landscape Grading Plan
LH100 Hardscape Plan
- Item No. 2: RFI: Are you wanting the windscreen to be 6'H on the 10'H fence?
RESPONSE: ***Bid windscreen as specified.***
- Item No. 3: RFI: (Crawford Murphy Park) Came up with about 695 LF of existing fence to demo. The estimated quantity is 1,376 LF, can you clarify?
RESPONSE: ***Use 690 LF of existing fence to demolish***
- Item No. 4: RFI: (Stotts) Is the ribbon curb 10" or 12" and will it follow the ribbon curb detail or the retaining ribbon curb detail?
RESPONSE: ***Use 12" ribbon curb not 10" RE: Item No. 1***
RESPONSE: ***Follow 12" Ribbon Curb Detail except where more than 4" of curb will be exposed on the outboard face. This is generally on the north and east side of the pickleball courts. RE. Grading plans.***

A Landscape Development Plan for Stotts Park Pickleball Courts

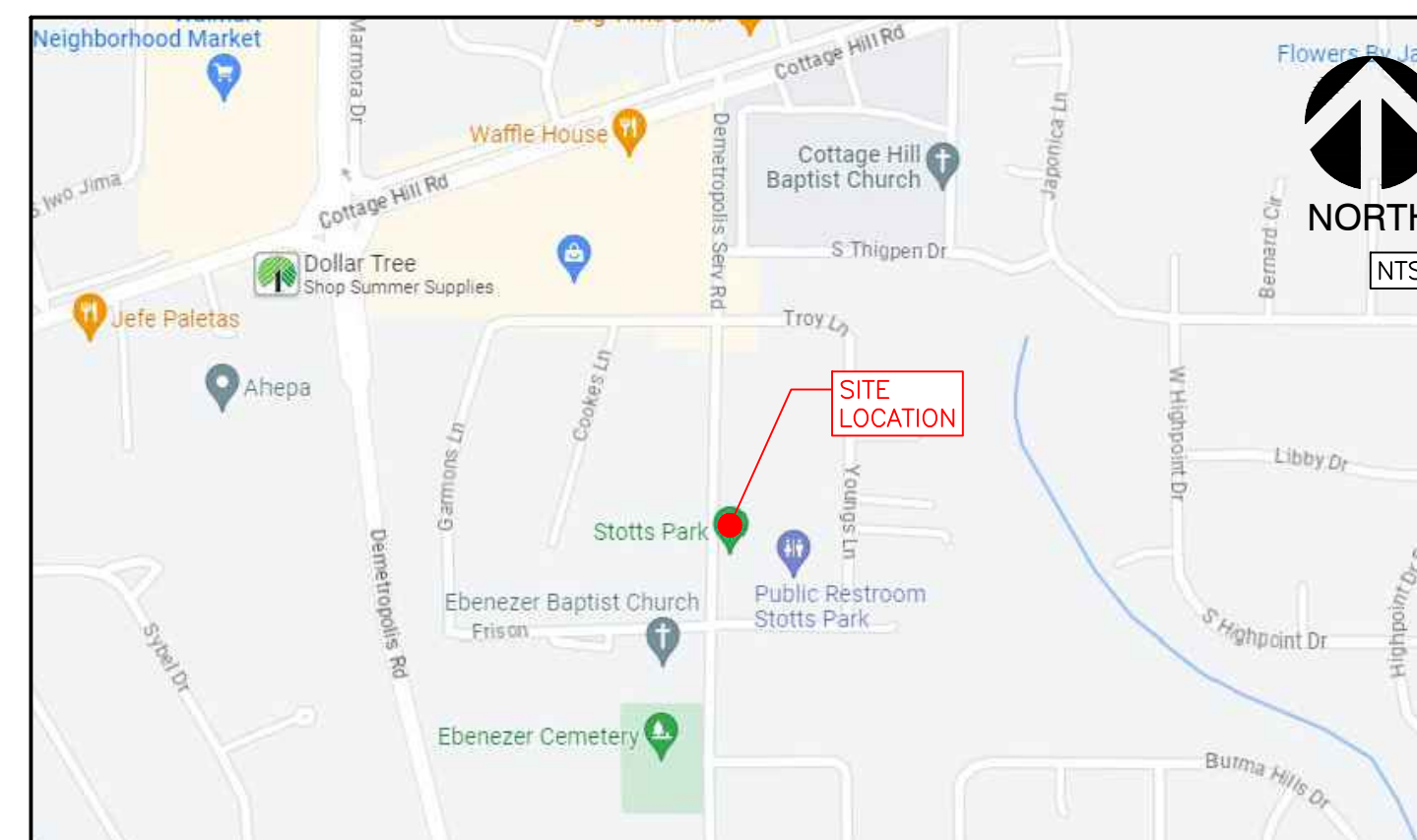
PR-047-23 Mobile, Alabama

Prepared for
City of Mobile
Mobile, AL.

Prepared by



Sheet List Table	
Sheet Number	Sheet Title
△△ CS100	COVER SHEET
EC100	EXISTING CONDITIONS
LS010	OVERALL SITE PLAN
LD100	DEMOLITION PLAN
△ ER100	EROSION CONTROL PLAN
△ LS100	SITE PLAN
△ LG100	LANDSCAPE GRADING PLAN
△ LH100	HARDSCAPE PLAN
△ LH500	HARDSCAPE DETAILS
△ LH501	HARDSCAPE DETAILS
△ LH502	HARDSCAPE DETAILS
△ LH503	HARDSCAPE DETAILS
E100	ELECTRICAL LEGEND AND SPECIFICATIONS
E200	EXISTING OVERALL PLAN - ELECTRICAL
E201	ENLARGED EXISTING PLAN - ELECTRICAL
E300	NEW WORK OVERALL PLAN - ELECTRICAL
E301	ENLARGED NEW WORK PLAN - ELECTRICAL
E400	ELECTRICAL DETAILS
E401	ELECTRICAL DETAILS



SITE LOCATION MAP

ABBREVIATION LEGEND			
ALUM	ALUMINUM	LP	LOW POINT
AC	ACRES	LT	LEFT
ACCMP	ASPHALT-COATED CORRUGATED METAL PIPE	LIN	LINER
ACP	ASBESTOS CEMENT PIPE	LF	LINEAR FEET
APPROX	APPROXIMATE(LY)	LC	LANDSCAPE CONTRACTOR
B&B	BALLED AND BURLAPPED	LA	LANDSCAPE ARCHITECT
BC	BOTTOM OF CURB	M	METER
BIT	BITUMINOUS	MAX	MAXIMUM
BM	BENCHMARK	MH	MANHOLE
BLDG	BUILDING	MIN	MINIMUM
BS	BOTTOM OF SLOPE	MISC	MISCELLANEOUS
BVC	BEGINNING OF VERTICAL CURVE	MON	MONUMENT
BW	BOTH WAYS	N	NORTH
CAL	CALIPER	NIC	NOT IN CONTRACT
CB	CATCH BASIN	NTS	NOT TO SCALE
CI	CAST IRON	NO	NUMBER
CIR	CIRCULAR	NOM	NOMINAL DIMENSION
CL	CENTERLINE	OC	ON CENTER
CLF	CHAIN-LINK FENCE	OD	OUTSIDE DIAMETER
CO	CLEANOUT	PA	PLANTING AREA
CM	CENTIMETER	PCP	POROUS CONCRETE PIPE
CMP	CORRUGATED METAL PIPE	PVC	POLYVINYL CHLORIDE PIPE
COL	COLUMN	PC	POINT OF CURVATURE
CONC	CONCRETE	PCC	POINT OF COMPOUND CURVATURE
CONTR	CONTRACTOR	PL	PROPERTY LINE
COR	CORNER	P-VC	POINT OF VERTICAL CURVATURE
C/S	CROSS SLOPE	PVT	POINT OF VERTICAL TANGENT
C/W	CONNECTED WITH	PT	POINT OF TANGENT
CF	CUBIC FEET	R	RADIUS
CY	CUBIC YARD	RCP	REINFORCED CONCRETE PIPE
D	DEGREE OF CURVATURE	ROW	RIGHT OF WAY
DETL	DETAIL	RT	RIGHT
DMH	DROP MANHOLE	REQD	REQUIRED
DF	DRINKING FOUNTAIN	REV	REVISION
DIM	DIMENSION	REINF	REINFORCED
DIA	DIAMETER	SAN	SANITARY
DWG	DRAWING	SECT	SECTION
DEP	DEPARTURE	SH	SHEET
DIR	DIRECTED	S	SOUTH
-E-	ELECTRICAL	SI	STORM INLET
E	EAST	-ST-	STORM SEWER
EA	EACH	-SAN-	SANITARY SEWER
EC	ELECTRICAL CONTRACTOR	SPEC	SPECIFICATIONS OR SPECIFIED
EL	ELEVATION	ST'L	STEEL
EAP	EXPOSED AGGREGATE PAVING	SQ	SQUARE
EVC	END OF VERTICAL CURVE	SF	SQUARE FOOT
ENGR	ENGINEER	SY	SQUARE YARD
EX	EXISTING	STA	STATION
EXP	EXPANSION	S/S	STAINLESS STEEL
EW	END WALL	-T-	TELEPHONE
ES	END SECTION	T	TANGENT
FFE	FINISHED FLOOR ELEVATION	TC	TOP OF CURB
FG	FINISHED GRADE	TE	TAPERED END
FIN	FINISH	T&G	TERRA-COTTA PIPE
FL	FLOOR	TW	TONGUE AND GROOVE
FH	FIRE HYDRANT	TS	TOP OF WALL
FL	FLOW LINE	TWP	TOP OF SLOPE
FSD	FULL-SIZED DETAIL	TYP	TYPICAL
FTG	FOOTING	UD	UNDERDRAIN
FT	FOOT OR FEET	USGS	US GEOLOGICAL SURVEY
GA	GAUGE	VC	VERTICAL CURVE
-G-	GAS	VAR	VARIABLE
GAL	GALLON	VERT	VERTICAL
GALV	GALVANIZED	VCP	VITRIFIED CLAY PIPE
GC	GENERAL CONTRACTOR	-W-	WATER
GR	GUARD RAIL	W	WEST
GD	GRADE	W/	WITH
GV	GAS VALVE	W/O	WITHOUT
HB	HOSE BIB	WWM	WOVEN WIRE MESH
HW	HEAD WALL	WV	WATER VALVE
HP	HIGH POINT	YD	YARD DRAIN
HT	HEIGHT	Ø	ROUND DIAMETER
HOR	HORIZONTAL	@	AT
HWY	HIGHWAY	'	FEET
ID	INSIDE DIAMETER	"	INCHES
IN	INCH	#	NUMBER
INL	INLET	#1	POUND
INV	INVERT		
JB	JUNCTION BOX		
L	LENGTH OF CURVE		
LAT	LATITUDE		

CONSTRUCTION LAYOUT NOTES

SURVEYOR TO CONTACT LANDSCAPE ARCHITECT FOR AUTOCAD FILE FOR HARDSCAPE LAYOUT.
CONTRACTOR TO PROVIDE STAKING OF HARDSCAPE ELEMENTS AS REQUIRED FOR WORK.
CONTACT LANDSCAPE ARCHITECT FOR REVIEW OF LOCATIONS PRIOR TO COMMENCEMENT OF CONSTRUCTION.

PROJECT SUMMARY

THE PROJECT DESCRIBED WITHIN THESE DRAWINGS AND THE ACCOMPANYING PROJECT MANUAL IS A LANDSCAPE DEVELOPMENT PROJECT THAT COVERS WORK DESCRIBED AS:

- SITE: FITNESS TRAIL W/ EQUIPMENT
- GRADING: ADA ACCESSIBLE AMENITIES AND PATHWAYS
- UTILITIES: AS REQUIRED FOR PROPER FUNCTION OF SITE DESIGN
- HARDSCAPE: CONCRETE AND PAVER PEDESTRIAN PAVING; RIBBON CURBS
- RECREATION AREA: IMPACT MATERIALS; STAIRS; BOLLARDS/BARRIERS
- FURNITURE: FITNESS EQUIPMENT; BENCHES; DRINKING FOUNTAIN

THIS PROJECT WILL BE COMPETITIVELY BID WITH THE OWNER DETERMINING THE WINNING SUBCONTRACTOR AT HIS SOLE DISCRETION. THE CONTRACT AMOUNT SHALL BE BASED UPON A STIPULATED SUM THAT IS INDICATED ON THE PROJECT'S BID FORM. THE WORK AGREEMENT SHALL BE BETWEEN THE CONTRACTOR AND THE PROJECT OWNER. THE OWNER HAS RETAINED THE SERVICES OF WAS DESIGN, INC. TO ASSIST IN CONSTRUCTION OBSERVATION AND CONTRACT ADMINISTRATION.

800-292-8525
#DIG (Cellular)
Dig Safely.



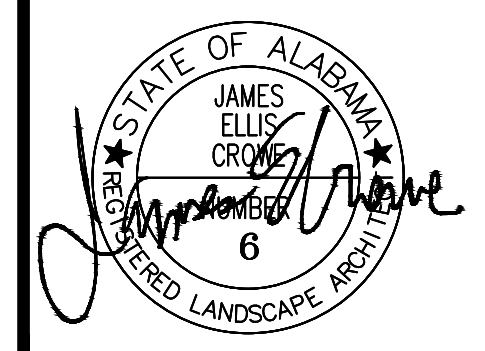
NOT FOR CONSTRUCTION
THESE PLANS HAVE NOT BEEN APPROVED AND ARE SUBJECT TO CHANGE.

A Landscape Development Plan for
**Stotts Park
Pickleball Courts**
PR-047-23 Mobile, Alabama

Revisions		
No.	Date	Revisions / Submissions
	08.31.23	90% CLIENT REVIEW
	11.09.23	100% CD
1	11.13.23	ADDENDUM 2
2	11.27.23	ADDENDUM 3

© Copyright 2023 WAS Design Inc. These documents and their contents are the property of WAS Design. Any reproductions, revisions, modifications or use of these documents without the express written consent of WAS Design is prohibited by law.

KWP	Registration
Drawn	
DCT	
Project Manager	
JEC	
Principal	
236010-031	
Project No.	
08.03.23	
Date	



Sheet Title

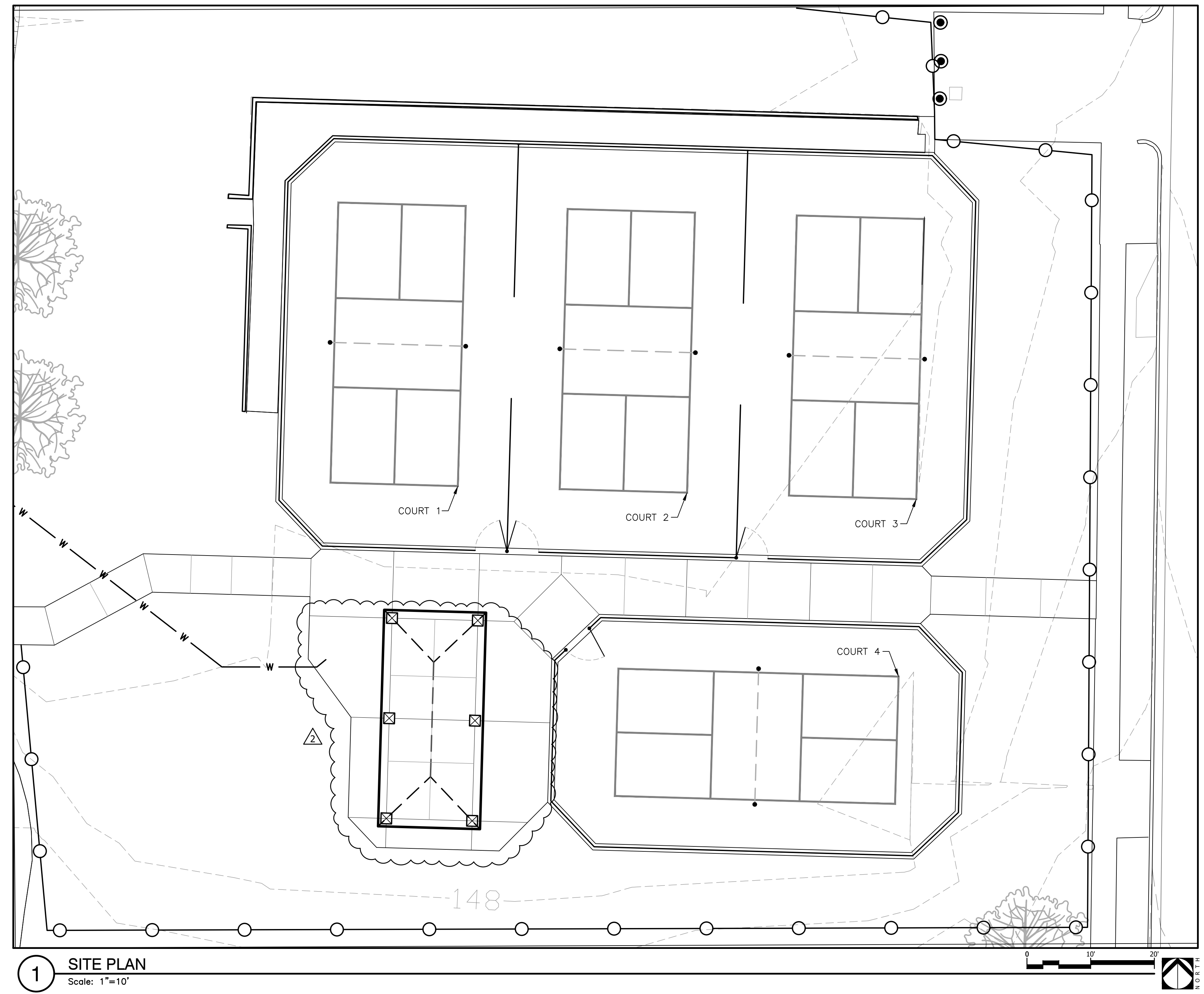
COVER SHEET

Sheet No.

CS100

NOT
FOR CONSTRUCTION
THESE PLANS HAVE NOT BEEN
APPROVED AND ARE SUBJECT
TO CHANGE.

A Landscape Development Plan for
Stotts Park
Pickleball Courts
PR-047-23 Mobile, Alabama



1 SITE PLAN
Scale: 1"=10'

Revisions		
No.	Date	Revisions / Submissions
—	08.31.23	90% CLIENT REVIEW
—	11.09.23	100% CD
2	11.27.23	ADDENDUM 3
—	—	—
—	—	—
—	—	—

© Copyright 2023 WAS Design Inc. These documents and their contents are the property of WAS Design. Any reproductions, revisions, modifications or use of these documents without the express written consent of WAS Design is prohibited by law.

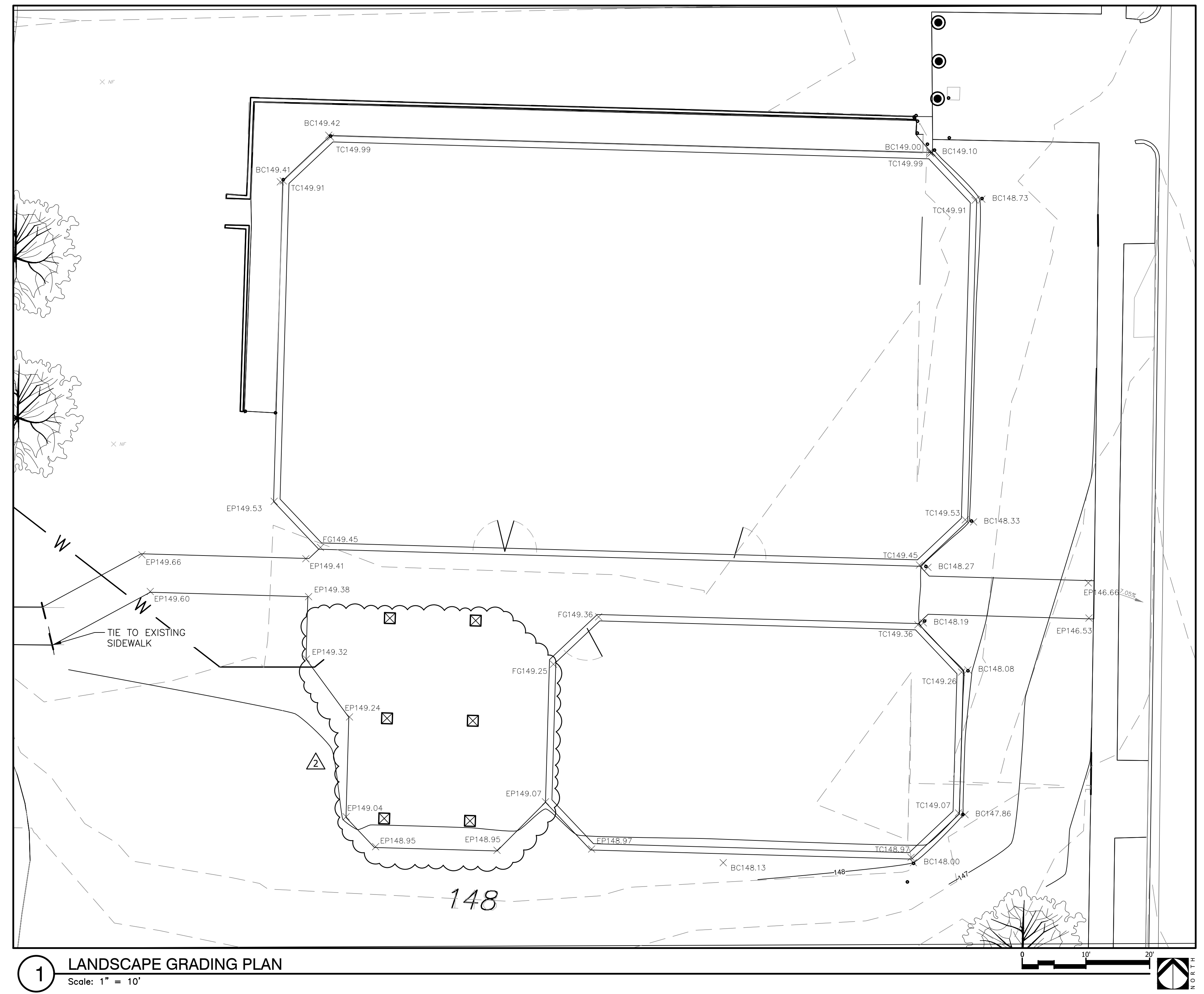
KWP _____ Registration
Drawn _____
DCT _____
Project Manager _____
JEC _____
Principal _____
236010-031 _____
Project No. _____
08.03.23 _____
Date _____

Sheet Title

SITE PLAN

NOT
FOR CONSTRUCTION
THESE PLANS HAVE NOT BEEN
APPROVED AND ARE SUBJECT
TO CHANGE.

A Landscape Development Plan for
Stotts Park
Pickleball Courts
PR-047-23 Mobile, Alabama



GRADING LEGEND

	= DIRECTION OF SURFACE DRAINAGE FLOW ROUTE		= FIRE HYDRANT
	= SPOT ELEVATION (PROPOSED)		= BOTTOM OF STEPS
	= SPOT ELEVATION: EXISTING GRADE		= BOTTOM OF CURB
	= DRAIN OUTLET 4" SCH 80 MITTERED OUTLET		= BOTTOM OF WALL
	= INLET RE: 4" ATRIUM GRATE ON STAND PIPE		= COPING ELEVATION
	= FLOW LINE		= EXISTING GRADE
	= RIDGE LINE		= EDGE OF PAVEMENT
	= STORM DRAIN		= FINISH FLOOR
	= STORM DRAIN MANHOLE		= FINISHED GRADE
	= SANITARY SEWER SERVICE LINE		= FINISHED SURFACE
	= SANITARY SEWER MANHOLE		= FLOW LINE
	= WATER MAIN LINE		= GRADE BREAK
	= EXTENTS OF GRADING		= HIGH POINT
			= DRAIN INLET
			= INVERT ELEVATION
			= LOW POINT
			= MANHOLE
			= RIM ELEVATION
			= TOP OF CURB
			= TOP OF FOOTING
			= TOP OF GRATE
			= TOP OF STEPS
			= TOP OF WALL
			= TOP OF WATER

NOTE

THE TOPOGRAPHY INFORMATION IS BASED ON BEST AVAILABLE DATA AND NOT NECESSARILY AN "AS-BUILT SURVEY". THE CONTRACTOR IS RESPONSIBLE FOR FAMILIARIZING THEMSELVES WITH THE PROJECT AND REPORT ANY DISCREPANCIES TO THE LANDSCAPE ARCHITECT. MINOR FIELD ADJUSTMENTS ARE EXPECTED AND SHOULD NOT ALTER THE DESIGN INTENT. MAJOR ADJUSTMENTS SHOULD BE ADDRESSED WITH THE LANDSCAPE ARCHITECT. DIRECT ANY QUESTIONS AND/OR CONFLICTS TO THE LANDSCAPE ARCHITECT.

- GENERAL NOTES**
- CONTRACTOR SHALL BE RESPONSIBLE FOR MIN. REQUIREMENTS OF ADA ACCESSIBILITY GUIDELINES FOR THE CONSTRUCTION OF ACCESSIBLE ROUTES INCLUDING WALKS, RAMPS & LANDING TOLERANCES, CROSS SLOPES, RUNNING SLOPES, DETECTABLE WARNINGS AND HANDRAILS.
 - THE CONTRACTOR SHALL VERIFY ALL DIMENSIONS AND GRADES ON THE GROUND AND REPORT ANY DISCREPANCIES IMMEDIATELY TO THE LANDSCAPE ARCHITECT.
 - CONTRACTOR SHALL MAINTAIN POSITIVE DRAINAGE AWAY FROM ALL BUILDING FOUNDATIONS AND STRUCTURES.
 - CONTRACTOR SHALL ENSURE ALL AREAS ARE PROPERLY DRAINED, WITH NO SURFACE WATER PONDING OR PUDDLING.
 - MAX CROSS SLOPE SHALL BE 1.9%, MAX RUNNING SLOPE SHALL BE 5%. CONTRACTOR SHALL NOTIFY L.A. OF ANY CONFLICTS PRIOR TO LAYOUT AND/OR CONSTRUCTION.
 - WHERE INSTALLED ALONG THE ACCESSIBLE ROUTE, ALL SURFACE MATERIALS SHALL MEET ADA REQUIREMENTS FOR BEING STABLE, FIRM AND SLIP RESISTANT.
 - ALONG ALL ACCESSIBLE ROUTES WHERE SURFACE MATERIALS CHANGE, IF THERE IS A LEVEL CHANGE, IT SHALL NOT EXCEED 3" VERTICAL RISE. ANY RISE > 1/4" AND < 1/2" IS REQUIRED TO BE BEVELED WITH A MAX. 1:2 SLOPE.

Revisions

No.	Date	Revisions / Submissions
08.31.23		90% CLIENT REVIEW
11.09.23		100% CD
2	11.27.23	ADDENDUM 3

© Copyright 2023 WAS Design Inc. These documents and their contents are the property of WAS Design. Any reproductions, revisions, modifications or use of these documents without the express written consent of WAS Design is prohibited by law.

KWP Registration
Drawn
DCT
Project Manager
JEC
Principal
236010-031
Project No.
08.03.23
Date

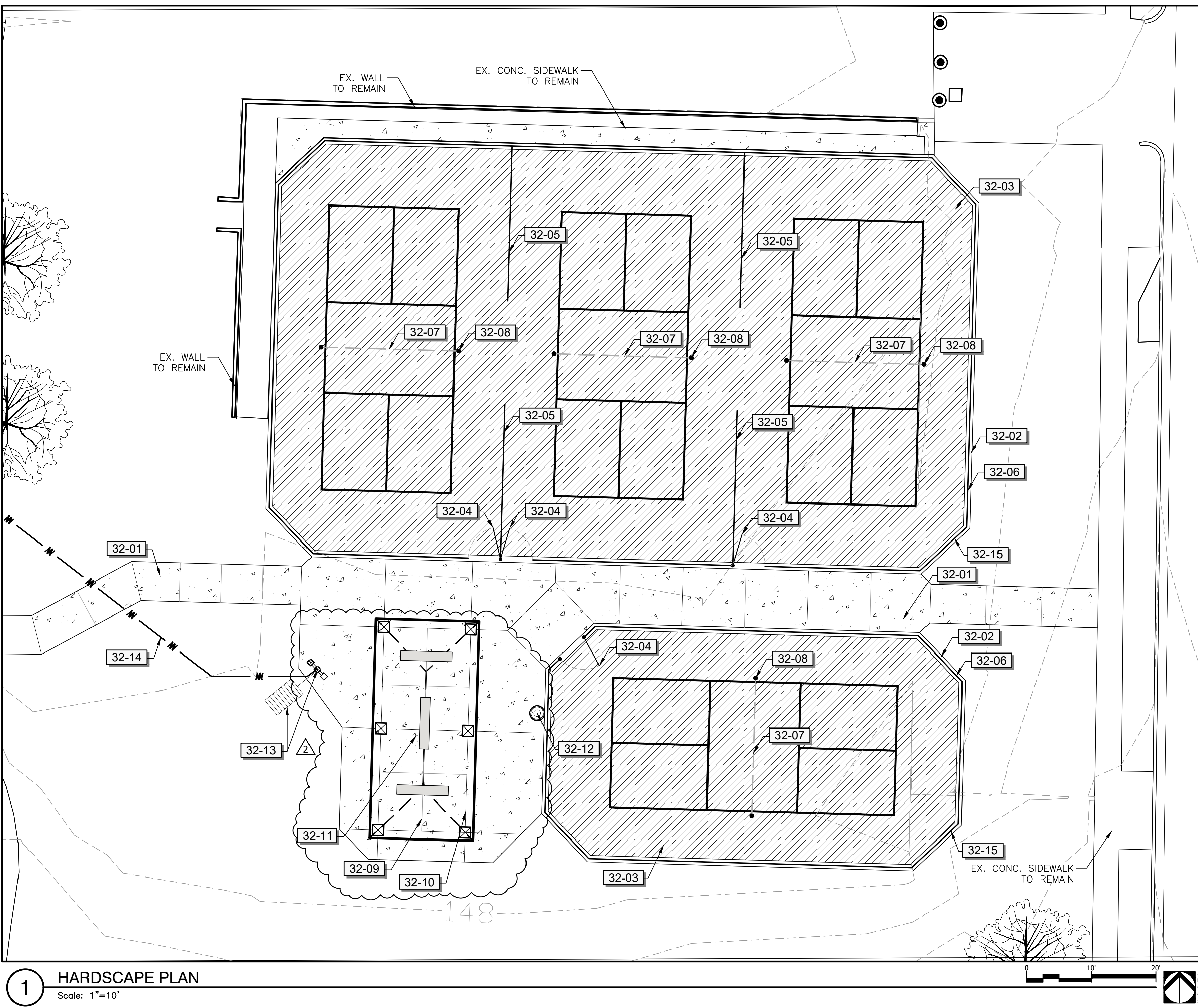
Sheet Title

LANDSCAPE GRADING PLAN

Sheet No. **LG100**

32 EXTERIOR IMPROVEMENTS SCHEDULE

SYMBOL	DESCRIPTION	ESTIMATED QTY	DETAIL	SYMBOL	DESCRIPTION	ESTIMATED QTY	DETAIL
32-01	CONCRETE, PEDESTRIAN; 4" - 3,000 PSI; FIBER REINFORCED; NATURAL GRAY; LIGHT BROOM FINISH; SCORING AS SHOWN.	2,839 SF	2/LH500	32-10	COLUMN: 36" HIGH X 24" SQ. CMU PAINTED COLUMN W/ 4" PRECAST CONCRETE CAP.	6	2/LH502
32-02	CONCRETE, 12" RIBBON CURB; 3,000 PSI; NATURAL GRAY.	511 LF	5/LH500	32-11	BENCH: CONCRETE; 8" - 3,000 PSI; TO BE NATURAL GRAY IN COLOR	3	4/LH500
32-03	ASPHALT PICKLEBALL COURT	8,766 SF	1/LH501	32-12	TRASH RECEPTACLE: ULTRASITE OR APPROVED EQUAL; MODEL CL-36RB14; BLACK IN COLOR	1	9/LH501
32-04	GATE; 4' CHAINLINK GATE; VINYL COATED; BLACK IN COLOR.	4	/	32-13	DRINKING FOUNTAIN WITH BOTTLE FILLER: BY HALSEY TAYLOR OR APPROVED EQUAL; MODEL LK4430BF1M; BLACK IN COLOR; ENSURE ADA ACCESSIBILITY; 1" SCH-40 PVC WATER LINE - CONTACT LA W/ QUESTIONS.	1	2/LH503
32-05	FENCE; 4' CHAINLINK FENCE; VINYL COATED; BLACK IN COLOR.	96 LF	1/LH503	32-14	UTILITY WATER LINE: CONNECT TO EXISTING DOMESTIC UTILITY WATER LINE	80 LF	2/LH503
32-06	FENCE; 8' CHAINLINK FENCE; VINYL COATED; BLACK IN COLOR.	511 LF	/	32-15	WINDSCREEN; BY BALL FABRICS OR APPROVED EQUAL; 6'-0" IN HEIGHT; BLACK IN COLOR; HEMMED WITH BRASS GROMMETS AT 12" O.C.; SUBMIT SHOP DRAWINGS FOR APPROVAL PRIOR TO INSTALLATION.	511 LF	
32-07	PICKLEBALL; ASPHALT COURT	4	1/LH501				
32-08	PICKLEBALL; NET AND POST SYSTEM	4	/				
32-09	16'X34' SHELTER BY CEDAR FOREST PRODUCTS OR APPROVED EQUAL; MODEL #RH1634; INSTALL PER MANUFACTURERS RECOMMENDATIONS. COLOR BY OWNER. SUBMIT SHOP DRAWINGS FOR APPROVAL PRIOR TO INSTALLATION.	1					



QUANTITY TAKEOFF DISCLAIMER
 QUANTITIES NOTED ON PLANS ARE OFFERED AS A CONVENIENCE TO THE CONTRACTOR FOR BID PURPOSES ONLY. CONTRACTOR SHALL VERIFY ALL QUANTITIES AND REPORT ANY DISCREPANCIES TO THE LANDSCAPE ARCHITECT.

1 HARDSCAPE PLAN
 Scale: 1"=10'

NOT FOR CONSTRUCTION
 THESE PLANS HAVE NOT BEEN APPROVED AND ARE SUBJECT TO CHANGE.

A Landscape Development Plan for
Stotts Park
Pickleball Courts
 PR-047-23 Mobile, Alabama

Revisions

No.	Date	Revisions / Submissions
	08.31.23	90% CLIENT REVIEW
	11.09.23	100% CD
2	11.27.23	ADDENDUM 3

© Copyright 2023 WAS Design Inc. These documents and their contents are the property of WAS Design. Any reproductions, revisions, modifications or use of these documents without the express written consent of WAS Design is prohibited by law.

KWP Registration
 Drawn
 DCT
 Project Manager
 JEC
 Principal
 236010-031
 Project No.
 08.03.23
 Date

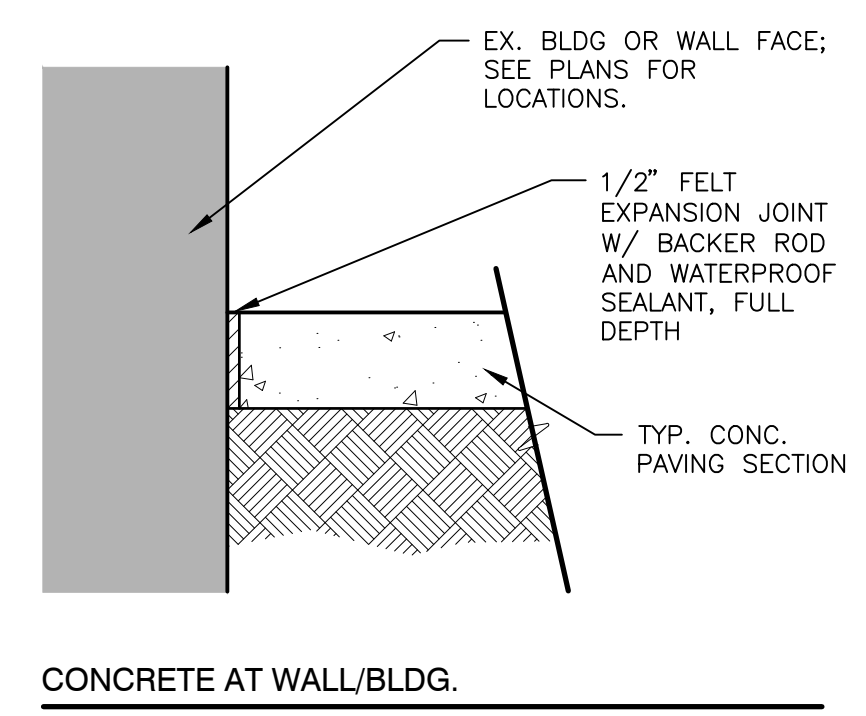
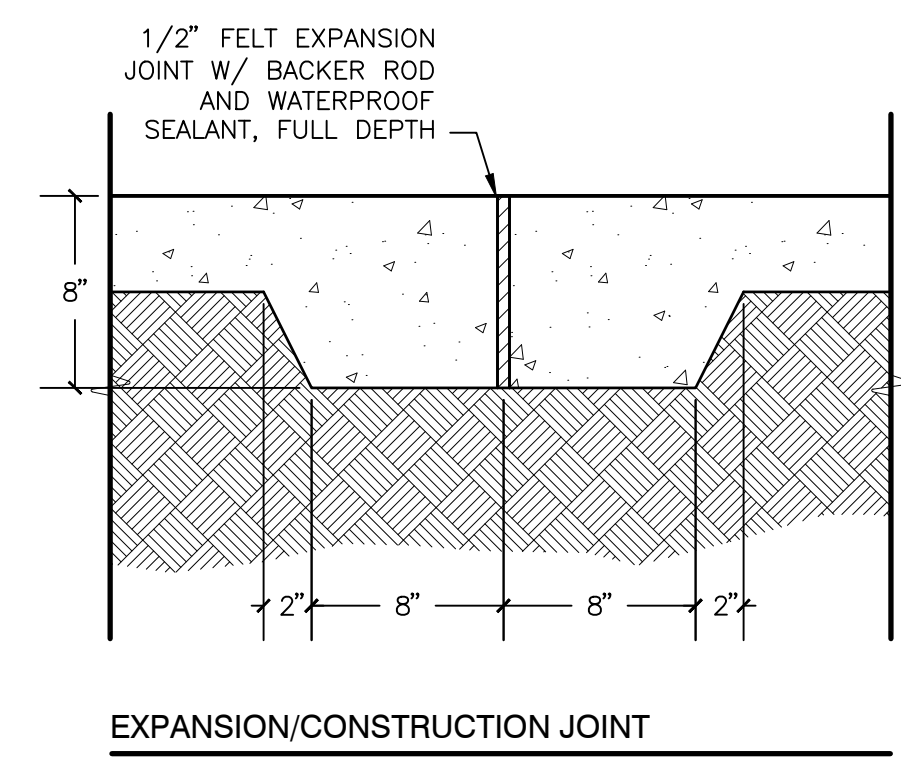
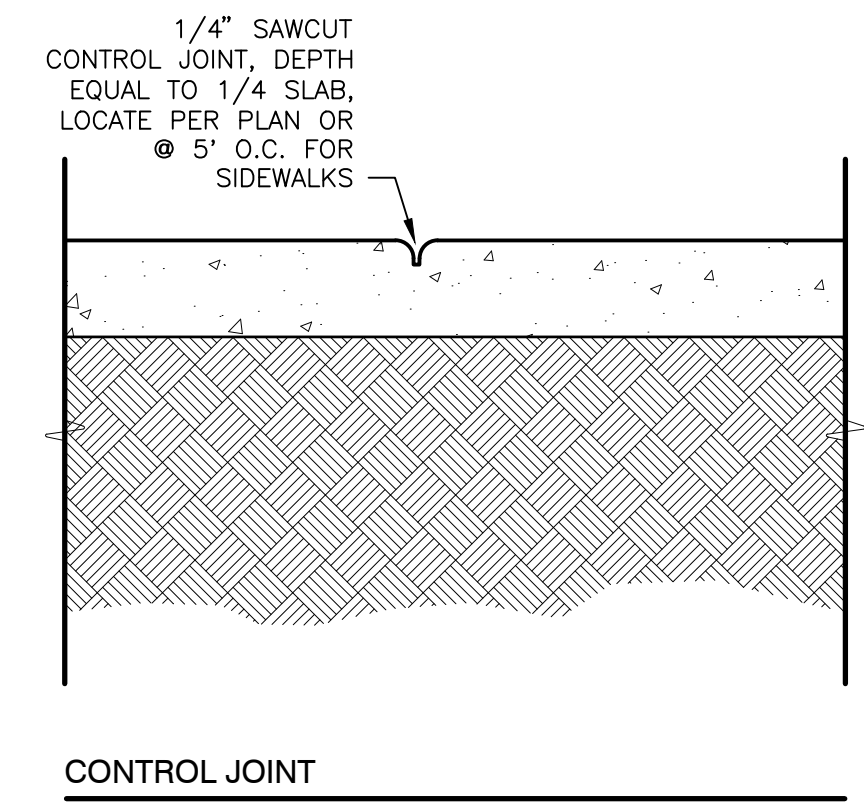
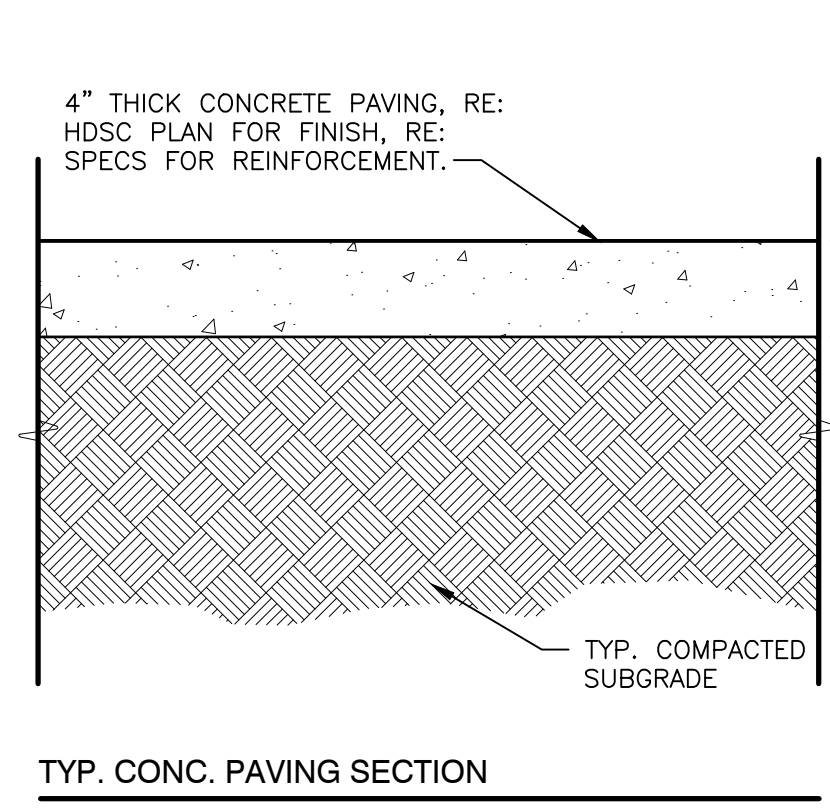
Sheet Title

HARDSCAPE PLAN

Sheet No.
LH100

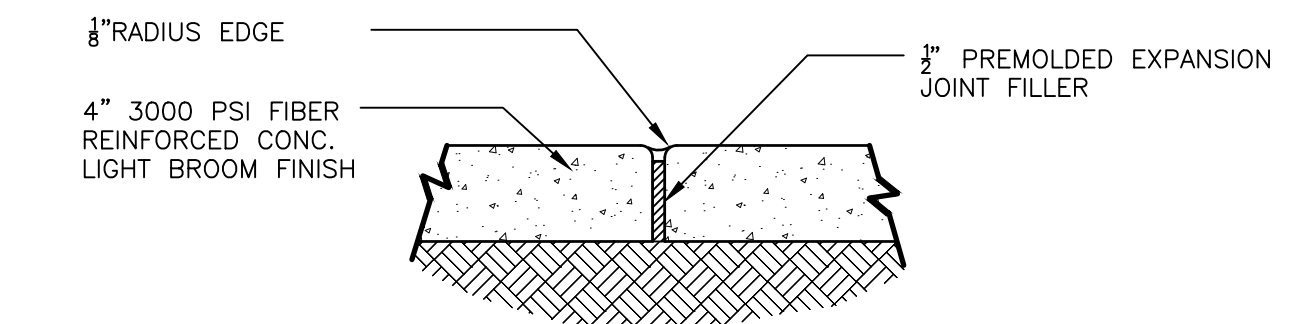
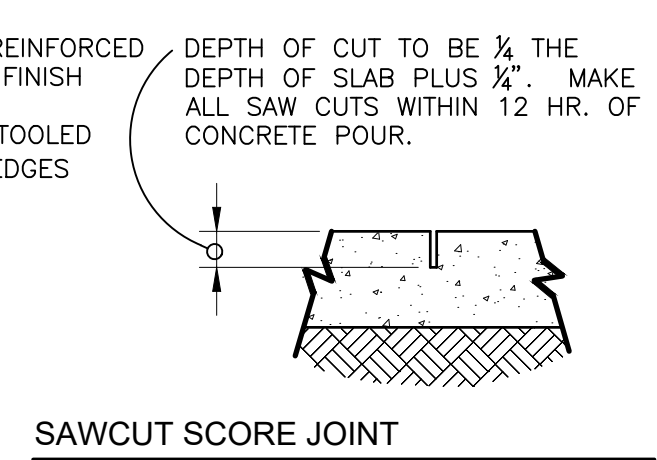
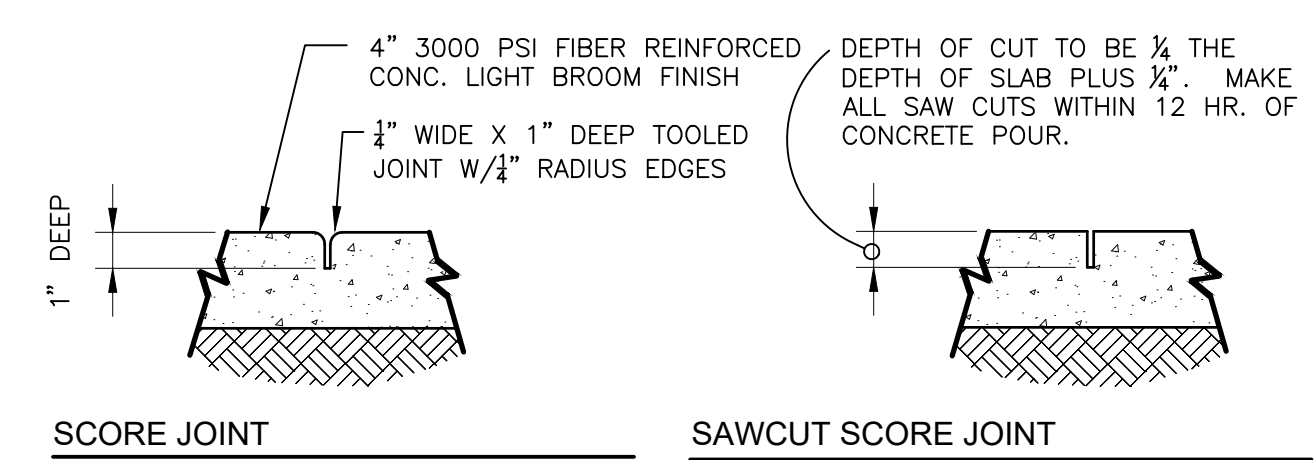
NOT
FOR CONSTRUCTION
THESE PLANS HAVE NOT BEEN
APPROVED AND ARE SUBJECT
TO CHANGE.

A Landscape Development Plan for
Stotts Park
Pickleball Courts
PR-047-23 Mobile, Alabama

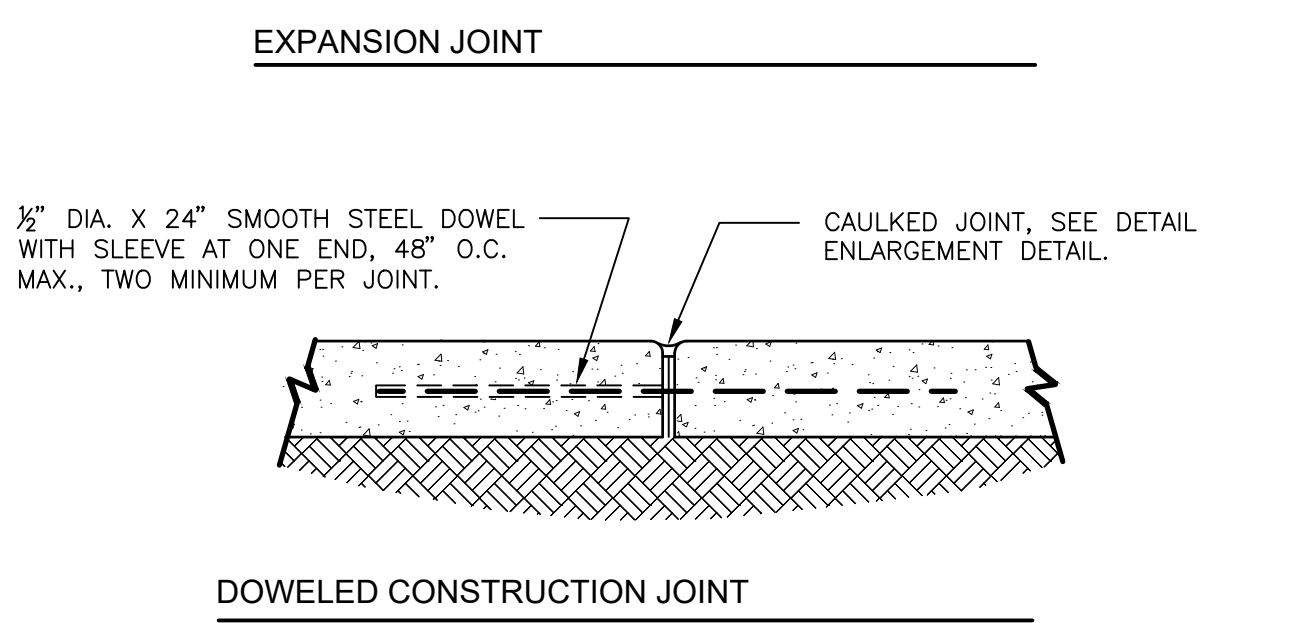


6 PEDESTRIAN CONCRETE PAVING
1 1/2" = 1'-0"

S-PA-CO-11

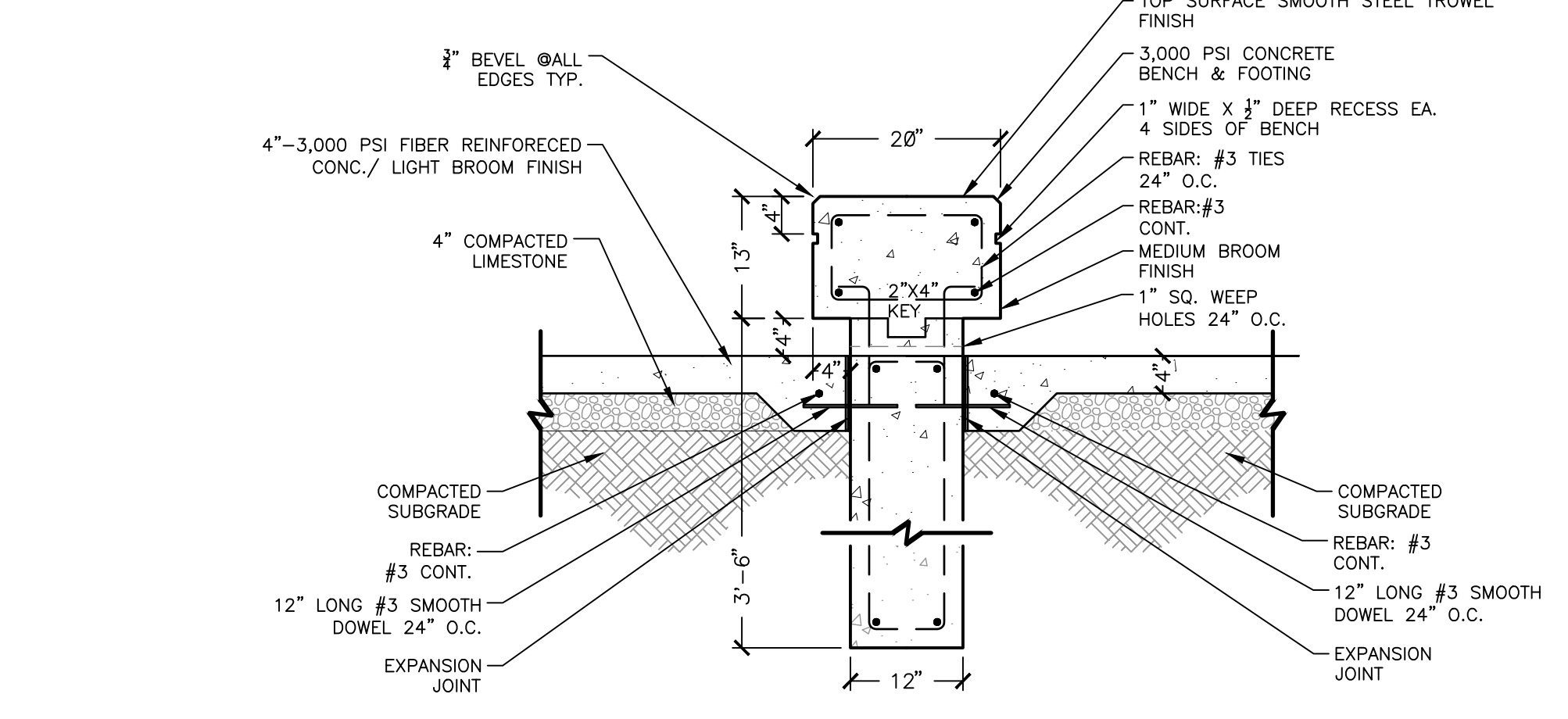


NOTE:
1. JOINT FILLER TO BE FLUSH WITH SIDEWALK SURFACE WHEN JOINT SEALER IS USED.
2. EXP. JOINT MATERIAL TO MEET ALDOT SPECIFICATIONS 832.01 & 832.02



1 TYPICAL CONCRETE PAVING JOINT DETAILS
1 1/2" = 1'-0"

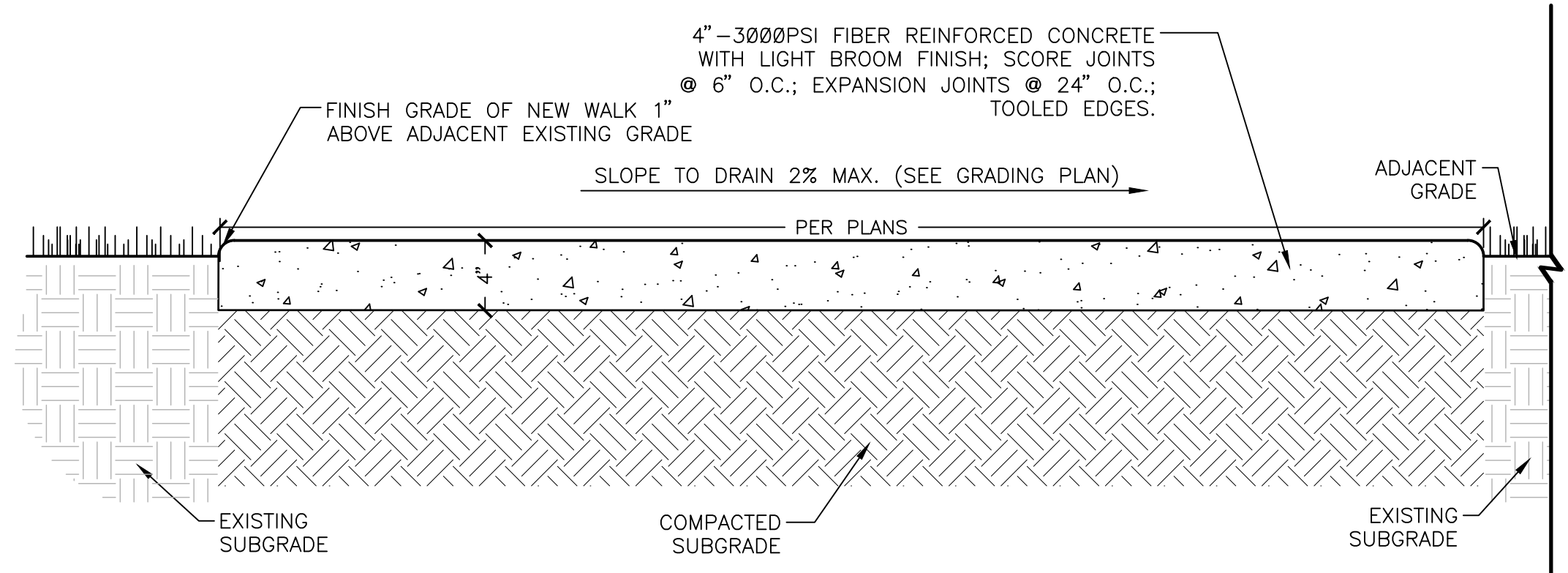
S-PA-CO-73



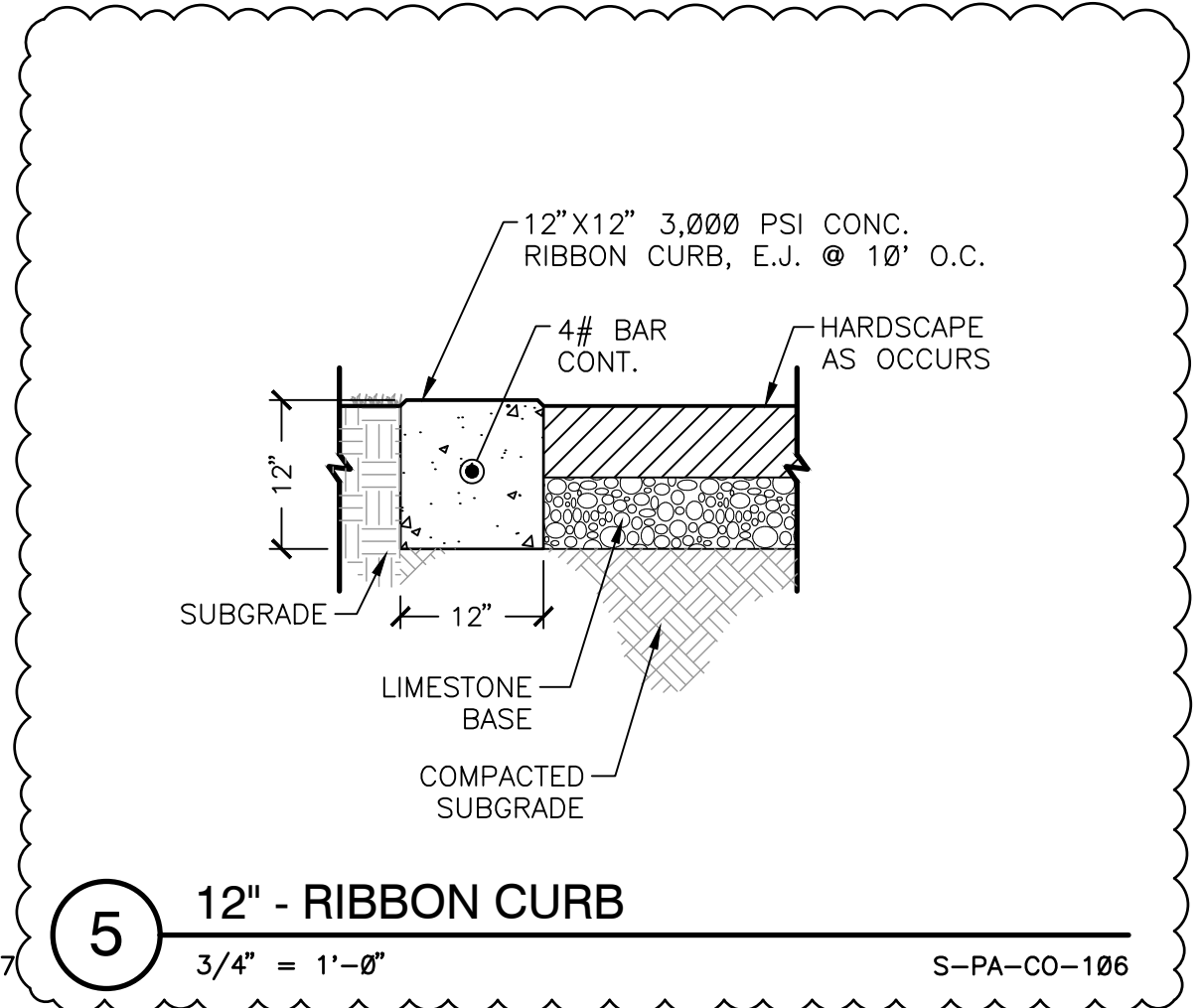
4 NEW CONCRETE BENCH DETAIL
3/4" = 1'-0"

S-FU-27

2 CONCRETE WALK DETAIL
1 1/2" = 1'-0"



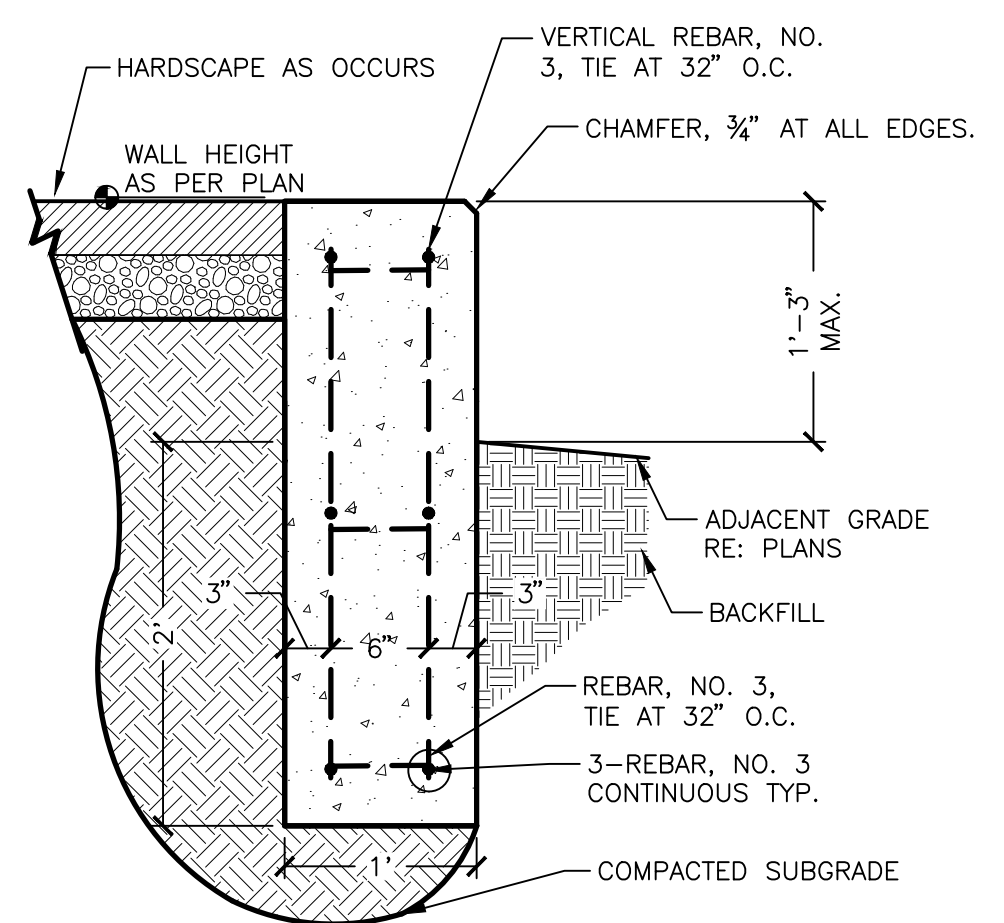
S-PA-CO-46



5 12" - RIBBON CURB
3/4" = 1'-0"

S-PA-CO-106

3 12" RETAINING RIBBON CURB
1" = 1'-0"

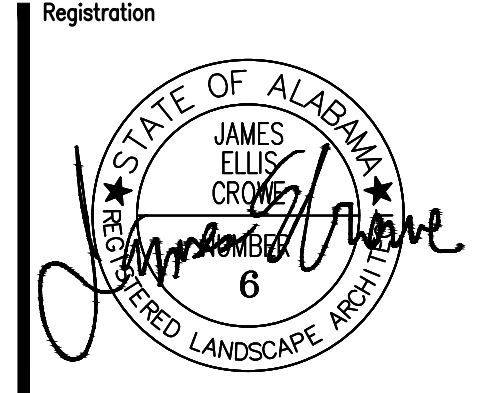


WALL-RETN-19

Revisions		
No.	Date	Revisions / Submissions
08.31.23		90% CLIENT REVIEW
11.09.23		100% CD
11.27.23		ADDENDUM 3

© Copyright 2023 WAS Design Inc. These documents and their contents are the property of WAS Design. Any reproductions, revisions, modifications or use of these documents without the express written consent of WAS Design is prohibited by law.

KWP	Registration
Drawn	
DCT	
Project Manager	
JEC	
Principal	
236010-031	
Project No.	
08.03.23	
Date	



Sheet Title

**HARDSCAPE
DETAILS**

Sheet No.
LH500