



To: Prospective Bidders

From: Will Mastin
City of Mobile Architectural Engineering Department

Re: Tricentennial Park – Site Improvements
Project #PR-004-23

Date: November 27, 2024

This Addendum forms a part of, and modifies, the Request for Bids, for the above referenced project, dated September 21, 2023. Acknowledge the receipt of this Addendum No. 1 in the space provided on the Bid Form. Failure to do so may subject Bidder to disqualification.

General:

Clarifications:

Item 1. See RFI questions and answers below.

Request for Bids:

N/A

Drawings:

See Attached Product Specifications.

RFI's:

Question: Would these two attachments be accepted as approved equals for the Tricentennial Park Project. (Outdoor Pet Fountain and Outdoor Bottle Fillers – see attachments below)

Answer: The materials appear to meet the design intent and the specifications or the basis of design units listed in the bid documents. We therefore approve of these items as substitutes of the specified units and will accept bids based on these materials.

Question: Please see attached request for approved equal on this product as well. (Ultra Site Swing Bench – no attachment included)

Answer: This unit is not approved as a substitution. It does not meet the design intent and will not fit the specifications and details as provided in the construction documents.

**END OF ADDENDUM NO. 2
(See Attachments Below)**

GY Series

MODEL GYV34
BARRIER-FREE OUTDOOR PEDESTAL
BI-LEVEL DRINKING FOUNTAIN WITH
BOTTLE FILLER

STANDARD FEATURES

- Adult ADA compliant
- Pushbutton and hands-free sensor operated Bottle filler
- Battery pack 6-AA
- Laminar flow water supply to bottle filler
- Resistant to sunlight, heat, moisture and wear
- 18 Gage, 304 stainless steel drinking fountain bowls
- 12 Gage, heavy duty stainless steel construction with corrosion and scratch resistant finish
- Stainless steel, anti-rotation non-squirt bubbler
- 100-mesh inlet strainer
- Lead and cyst filter (Not available with FRU option)
- Access cover, heavy duty stainless steel, vandal resistant

SUGGESTED SPECIFICATIONS

Barrier-free drinking fountains with bottle filler shall be Murdock model GYV34. Construction shall be 12 gage, all stainless steel with 18 gage stainless steel fountain bowls. Pedestal base shall have four mounting holes. Access covers shall be secured with vandal-resistant stainless steel screws. Bottle filler shall be activated by a 9-volt sensor or a pushbutton as standard and provide 1.0 GPM flow. Unit shall contain a 100-mesh inlet strainer, lead and cyst filter, 6-AA battery pack and laminar flow spout. Self-closing pushbutton, needing less than 5 pounds of force, shall activate internally mounted valves with adjustable stream regulators. Bubblers shall be stainless steel with non-squirt feature and operate on water pressure range of 20-105 PSIG. Fountain is certified to ANSI A117.1. Unit shall be certified to Public Law 111-380 (NO-LEAD) and NSF/ANSI/CAN 61. Fixture meets ADA requirements when mounted appropriately.



Model GYV34 Shown

MODEL:

(Must Specify)

- GYV34 Satin Stainless Finish (Shown)
- GYV35 Green Powder-Coated
- GYV36 Red Powder-Coated
- GYV37 Blue Powder-Coated

OPTIONAL ACCESSORIES

(additional costs may be incurred)

- CV Cartridge valve on fountains (Not available with freeze-resistant valve)
- FRU3 Underground freeze-resistant, 3 valves¹ (Less filter and sensor)
- FRU4 Underground freeze-resistant, 4 valves¹ (Less filter and sensor)
- IAP In-ground anchor plate
- LOGO Customer specified logo
- LSR Bowl with Leaf and Debris Strainer¹
- MO Bottle filler operated by pushbutton only (Standard with freeze-resistant valves)
- PF Pet fountain¹

Option Notes:

¹ See separate option sheet

Complies with the following standards:



Federal Public Law 111-380 (No Lead)



Recyclable Product



Water Conserving Product

Product Warranty

⚠ WARNING: Cancer and Reproductive Harm - www.P65Warnings.ca.gov

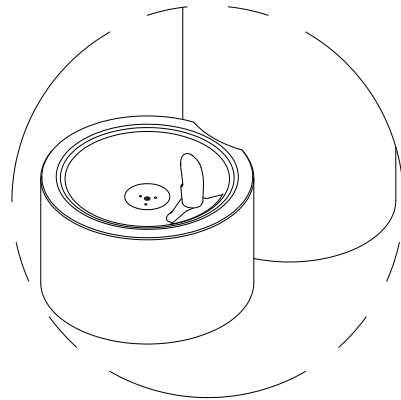
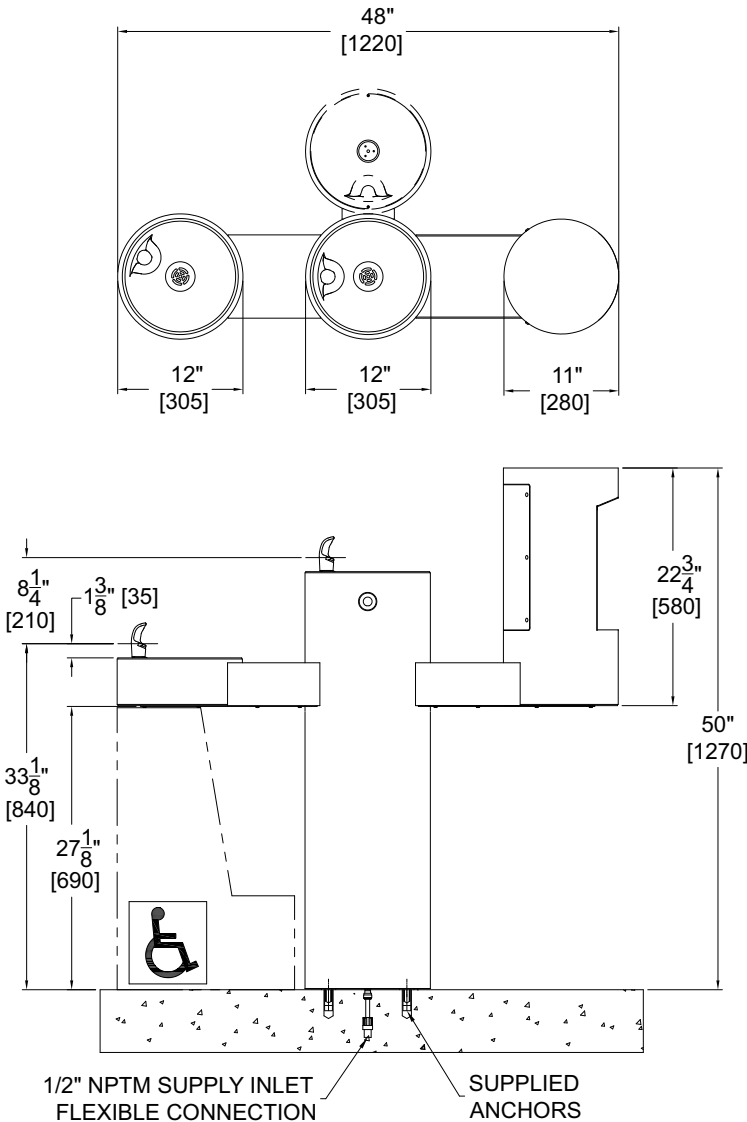
MURDOCK MFG. • 15125 Proctor Avenue • City of Industry, CA 91746 USA
Phone 800-453-7465 or 626-333-2543 • www.murdockmfg.com

Member of
MORRIS GROUP
INTERNATIONAL

IMPORTANT: INSTALLATION AND SITE PREP FOR FREEZE RESISTANT OPTIONS "-FRU" WILL DIFFER FROM STANDARD. REFER TO DESIGNATED FREEZE RESISTANT INSTALLATION DETAILS.

GY Series

MODEL GYV34
BARRIER-FREE OUTDOOR
PEDESTAL BI-LEVEL DRINKING
FOUNTAIN WITH BOTTLE FILLER



**OPTIONAL -PF PET FOUNTAIN
DETAIL**

* Valve specifications:
Minimum/Maximum Pressure
30 to 100 PSI.

**SELECTION SUMMARY
& APPROVAL FOR
MANUFACTURING**

Model Number & Options _____ Quantity _____

Company _____

Contact _____ Title _____

Signature _____ Date _____
(Approval for Manufacturing)

All dimensions are subject to manufactures tolerance of plus or minus 1/4" nominal and subject to change without notice. Murdock[®] assumes no responsibility for use of void or superseded data. Dimensions may change with the addition of optional accessories. Murdock[®] Mfg., Member of Morris Group International[®]. Please visit www.murdockmfg.com for most current specifications.

GR Series

MODEL GRT75-PF OUTDOOR PET FOUNTAIN

STANDARD FEATURES

- Resistant to sunlight, heat, moisture and wear
- 18 gage, 304 stainless steel bowl
- 12 gage, heavy duty steel receptor, corrosion and scratch resistant finish
- Polished stainless steel, anti-rotation non-squirt bubbler
- 100 mesh inlet strainer

SUGGESTED SPECIFICATIONS

Model GRT75-PF is an on-the-floor, outdoor pet fountain intended for wall mounting. The unit shall be made from an 18 gage, 304 stainless steel bowl mounted into a green powder coated 12 gage, heavy duty stainless steel receptor. Unit shall be activated by a side mounted, foot operated, self-closing button, and requiring less than 5 pounds of force to operate. Internally mounted valve includes an adjustable stream regulator controlling the water flow. Bubbler shall be polished stainless steel with a non-squirt feature and operate on water pressure range of 20-105 psig. Unit shall be certified to Public Law 111-380 (NO-LEAD) and NSF/ANSI/CAN 61.



MODEL:

(Must Specify)

- GRT74-PF Satin stainless finish
 - GRT75-PF Green powder-coated (Shown)
 - GRT76-PF Red powder-coated
 - GRT77-PF Blue powder-coated
- Custom color finishes available upon request

OPTIONS

(additional costs may be incurred)

- FRU1 Underground freeze-resistant valve for one bowl ¹
- NP1 Non-pollutable, freeze resistant valve ¹
- RFS Round free standing bowl

Options Notes:

¹ See separate option sheet.

Complies with the following standards:



Federal Public Law 111-380 (No Lead)



Recyclable Product



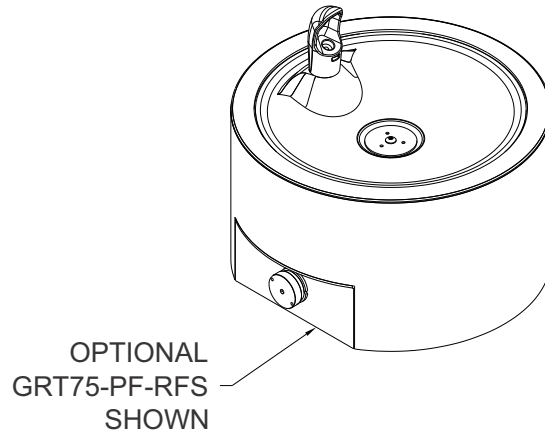
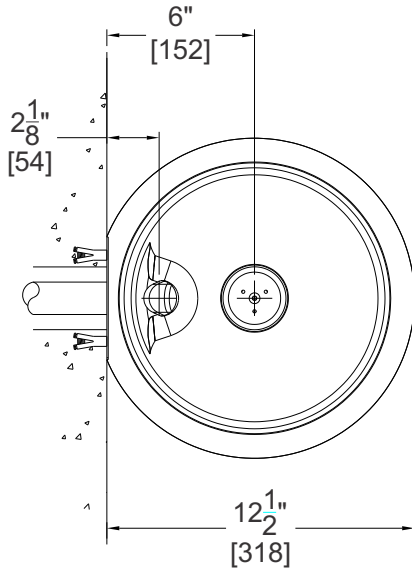
Water Conserving Product

Product Warranty

WARNING: Cancer and Reproductive Harm - www.P65Warnings.ca.gov

IMPORTANT: INSTALLATION AND SITE PREP FOR FREEZE RESISTANT OPTIONS "-FRU, -NP" WILL DIFFER FROM STANDARD. REFER TO DESIGNATED FREEZE RESISTANT INSTALLATION DETAILS.

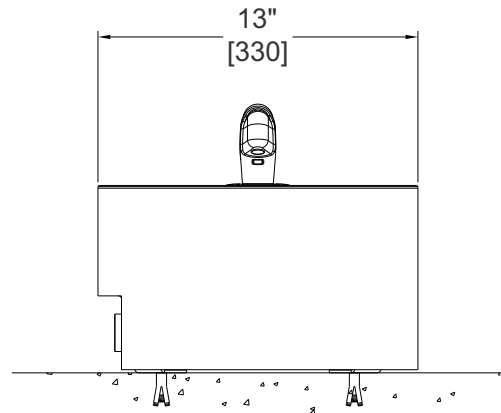
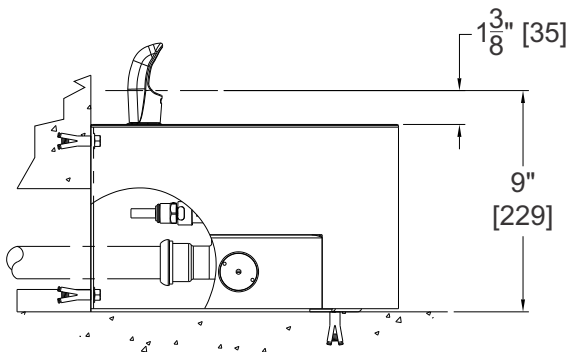
GR Series
MODEL GRT75-PF
OUTDOOR PET FOUNTAIN



* Valve specifications:
Minimum/Maximum Pressure
30 to 100 psi.

GENERAL NOTES:

1. ALL DIMENSIONS ARE IN INCHES [MM].
2. STOP VALVE NOT PROVIDED.



**SELECTION SUMMARY
& APPROVAL FOR
MANUFACTURING**

Model Number & Options _____	Quantity _____
Company _____	
Contact _____	Title _____
Signature (Approval for Manufacturing) _____	Date _____

All dimensions are subject to manufacturer's tolerance of plus or minus 1/4" nominal and subject to change without notice. Murdock® assumes no responsibility for use of void or superseded data. Dimensions may change with the addition of optional accessories. Murdock® Mfg., Member of Morris Group International®. Please visit www.murdockmfg.com for most current specifications.